

**DETAILED TECHNICAL SPECIFICATIONS FOR TENDER FOR THE SUPPLY OF
NEW MOTOR VEHICLES, MOTOR CYCLES & PLANT
APPENDIX I – TABLE OF SPECIFICATIONS**

	KPLC Specifications	Description	Qty	Drawing No.
1	KPLC-TPT-01-16-17	Motor cycle, Trail, 120cc-130cc	112	
2	KPLC-TPT-03-16-17	Light Utility vehicle 4x4, 1800-2000cc, Petrol, Station wagon.	13	S.K No.09366 Sheet M/1
3	KPLC-TPT-02-16-17	Light truck, 4x2, 4.0-5.0 Ton, Constructed to carry wooden poles.	15	S.K No.09366 Sheet G/1
4	KPLC-TPT-04-16-17	Light truck, 4x2, 4.0-5.0 Ton, Low sided body (Street lighting bucket).	21	S.K No.09366 Sheet G/1
5	KPLC-TPT-05-16-17	Hydraulic high lift platform (street light bucket) on light truck.	21	
6	KPLC-TPT-06-16-17	Medium truck, 7-8 Ton, 4x2, cab chassis constructed to carry poles complete with rear crew cabin.	24	S.K No.09366 Sheet C2
7	KPLC-TPT-07-16-17	Medium truck, 7-8 Ton, 4x2, cab chassis medium sided body for stores.	2	S.K No.09366 Sheet C2
8	KPLC-TPT-08-16-17	Medium truck, 7-8 Ton, 4x2, cab chassis with low sided body.	17	S.K No.09366 Sheet C2
9	KPLC-TPT-09-16-17	11.0 Ton Truck Mounted Lifting crane, 110 KNm capable of lifting 6.0 ton, complete with Augur.	17	S.K No.09366 Sheet J2
10	KPLC-TPT-10-16-17	Heavy Truck, 6X4, 26.0 Ton Payload Cab chassis, Fully enclosed body.	1	
11	KPLC-TPT-11-16-17	Heavy Truck, 6X4, 26.0 Ton Payload Cab chassis, medium sided body.	1	
12	KPLC-TPT-12-16-17	Double cabin, 4x4, LWB, 2200 - 2500cc, Diesel complete tools cabin.	32	S.K No.09366 Sheet D3
13	KPLC-TPT-13-16-17	Single Cab, Open pick-up body, 4x4, 3800-4200cc, Diesel.	4	
14	KPLC-TPT-14-16-17	Double cab, 4x4, 3800-4200 cc, Diesel, complete tool box.	24	S.K No.09366 Sheet D3
15	KPLC-TPT-15-16-17	Microbus, 14-seater, 2400-3000cc, Diesel.	11	
16	KPLC-TPT-16-16-17	Minibus, 29-seater 4x2, 3800-4500cc, Diesel.	1	
17	KPLC-TPT-17-16-17	5.0 Ton Lifting Capacity Forklift capable of operating inside a standard transportation container.	1	
18	KPLC-TPT-18-16-17	8.0 Ton Lifting Capacity Forklift.	1	
19	KPLC-TPT-22-16-17	3 Wheel logger-loader.	4	

20	KPLC-TPT-19-16-17	Prime mover complete with semi-trailer (logging trailer).	1	
21	KPLC-TPT-20-16-17	3.5 Ton truck logging lifting crane complete with hook and grapple.	1	
22	KPLC-TPT-21-16-17	Prime mover complete with semi-trailer	2	
23	KPLC-TPT-22-16-17	Water bowser, 2500 liters capacity.	3	

MOTOR CYCLE, TRAIL, 120-130cc.**Quantity: 112****Specification No. KPLC-TPT-01-16-17.****Description: Motor cycle, trail, 120-130cc.****Tenderers' name:.....**

	KPLC requirements	Tenderer's Offer
1. GENERAL.		
a) Make:	-	
b) Model:	-	
c) Country of origin:	-	
d) Manufacturer's literature/brochures and specification supplied	Yes (mandatory)	
e) A standard production, motor cycle of latest design in class, in current production and marketed in Kenya.	Yes (mandatory)	
f) Capable of operating in tropical road conditions	Yes	
g) Supplied new	Yes (mandatory)	
2. DIMENSIONS AND WEIGHTS.		
a) Overall length approx.	2100 mm	
b) Overall width approx.	900 mm	
c) Overall height approx.	1100 mm	
d) Seat (saddle) height, approx.	850mm	
e) Wheelbase approx.	1300 mm	
f) Ground Clearance, approx.	260 mm (mandatory)	

g) Dry weight, approx.	100Kg	
3. ENGINE.		
a) Make	-	
b) Model	-	
c) Country of origin	-	
d) 2 stroke/4 stroke, air cooled, petrol engine	Specify	
e) Single cylinder	Yes	
f) Piston displacement, within range.	120-130cc (mandatory)	
g) Ignition system	Specify	
h) Starter system	Specify	
i) Maximum power output/rpm, min	12HP/9,000rpm Yes (mandatory)	
j) Maximum torque /rpm, min	9Nm/8000rpm Yes (mandatory)	
k) Average fuel consumption (on full load)	Specify Kms/lit	
l) Fuel Tank capacity, min.	9Lt.	
4. TRANSMISSION, BRAKES, TIRES AND SUSPENSION.		
a) Transmission, speed, minimum.	5 No.	
b) Final Transmission.	Chain drive	
c) Front and rear brakes	Drum	
d) Front size.	2.75-21-4PR	
e) Rear tyre size	4.10-18-4PR	

f) Suspension system, Front telescopic forks and rear mono-cross.	Yes (mandatory)	
5. ELECTRICAL SYSTEM/INSTRUMENTS		
a) Full lighting to conform to Kenya Traffic Act.	Yes	
b) Standard, major function gauges (speedometer, Tachometer, Odometer, trip counter, etc.)/and warning lights (oil warning light etc.) fitted.	Yes	
c) Fitted with suitable anti-theft alarm system.	Yes (mandatory)	
6. WARRANTY & FREE SERVICE.		
a) Each Motor cycle supplied should carry a statement of warranty	Yes	
b) Motor cycle warranty min., 6 Months or 6,000Km whichever comes first	Specify Months	
	Specify Kms	
c) Free Service on Labour & Parts	Parts (Kms)	
	Labour (Kms)	
7. MANUALS		
a) All literature in English language	Yes (mandatory)	
b) Repair manuals/microfiche/CD, supplied	Yes (mandatory)	
c) Parts catalogue/microfiche/CD, supplied	Yes (mandatory)	
d) Drivers handbook supplied	Yes	
e) Service schedule supplied	Yes	

8. OTHER REQUIREMENTS		
a) Motor cycle supplied with suitable crash helmet c/w eye protector and hand gloves.	Yes (mandatory)	
b) Motor cycle supplied complete with suitable standard fibreglass cargo box.	Yes (mandatory)	
c) Motor cycle to be painted in KPLC colour as per the user specification.	Yes (mandatory)	
d) Motor cycle to be registered by Registrar of Motor Vehicles.	Yes (mandatory)	
e) Motor cycle to be inspected by the Senior Transport Engineer prior to delivery.	Yes (mandatory)	
f) Firm's status: Franchise/Dealer/Agent	Specify	
g) g) Body construction and all fitments to conform to Kenya Traffic Act	Yes (mandatory)	
h) Indicate name and physical addresses of all Dealers/Agents where Genuine Spares and back-up service can be obtained In At least four major KPLC depots (Nairobi, Mombasa, Kisumu, Nyeri, Nakuru and Eldoret).	Attach list Yes (mandatory)	

LIGHT DUTY UTILITY, 4X4, PETROL, 1800-2200cc STATION WAGON COMPLETE WITH AIR CONDITIONING.

QUANTITY: 13

SPECIFICATION NO.KPLC-TPT-02-16-17

DESCRIPTION: Light duty utility, 4x4, Petrol, 1800-2200cc station wagon.

DRAWING NO: S.K No. 9366- Sheet M/1

TENDERERS'S

NAME:.....

	KPLC Requirements	Tenderer's Offer
1. GENERAL.		
a) Make	-	
b) Model	-	
c) Country of origin	-	
d) Manufacturer's Authorization Supplied	Yes (mandatory)	
e) Manufacturer's Literature & Brochures Supplied.	Yes (mandatory)	
f) Technical Specification Sheet fully completed and submitted.	Yes (mandatory)	
g) A standard production, 4x4, petrol utility vehicle station wagon of latest design in the class, robust construction in current production and marketed in Kenya.	Yes (mandatory)	
h) Supplied new.	Yes (mandatory)	
i) Designed for light duty specifications, capable of operating in tropical conditions of mud and dust.	Yes	
j) Most suitable for operating on both "on and off" road conditions.	Yes	
k) Most suitable for personnel and cargo transportation.	Yes	
2. DIMENSIONS AND WEIGHTS.		
a) Overall length min.	4,400 mm Yes (mandatory)	
b) Overall width min.	1,800 mm Yes (mandatory)	
c) Overall height approx.	1,680 mm Yes	
d) Wheel base min.	2,600 mm Yes (mandatory)	
e) Ground Clearance, min	200 mm Yes (mandatory)	
f) Max. G.V.W. approx.	2,000 Kg	
g) Kerb weight max.	1,600 Kg	

h) Payload weight, approx.	500 Kg	
i) Max. Gradient, approx.	Specify (degrees)	
j) Wading depth, approx.	Specify	
3. ENGINE.		
a) Make	-	
b) Model	-	
c) Country of origin	-	
d) Engine performance curves supplied	Yes	
e) Engine type petrol, 4 stroke.	Yes (mandatory)	
f) Engine cooling system, water cooled.	Yes (mandatory)	
g) Piston displacement, within range.	1,800cc – 2,200cc Yes (mandatory)	
h) Number of cylinders	4 cylinders	
i) Maximum power output /rpm, min	100Kw/6,000rpm	
j) Maximum torque developed/rpm), min	180Nm/4,000rpm	
k) Air filter, disposable/oil bath	Specify	
l) Multi Point Fuel Injection/Electronic Fuel Injection	Yes (mandatory)	
m) Average fuel consumption (on full load)	Specify Kms/lit	
n) Fuel tank capacity, min.	65Lts	
4. CLUTCH AND TRANSMISSION.		
a) Clutch, dry single plate, diaphragm type	Specify	
b) Hydraulic, clutch actuation	Yes	
c) All synchromesh gearbox	Yes	
d) Transmission speeds, min. 5 Speed	Yes (mandatory)	
e) 4 Wheel Drive configuration.	Yes (mandatory)	
5. BRAKES AND TYRES.		
a) Assisted hydraulic, dual brake system.	Yes	
b) Discs brake with booster.	Yes	
c) Brakes, discs at front or all round.	Specify Front:	
	Specify Rear:	
d) Mechanical parking brake, to act on transmission on Rear wheels.	Specify	
e) Specify Optimum Tyre size locally manufactured	Yes, Specify	
f) Fitted with Non-Alloy Standard Rim size 16"	Yes, Specify	
6. SUSPENSION AND STEERING.		
a) a) Independent front and rear suspension suitable for rugged terrain.	Yes	
b) Leaf or coil springs with telescopic dampers	Specify front	
	Specify rear	

c) Power steering	Yes (mandatory)	
d) Right hand drive steering	Yes (mandatory)	
7. STATION WAGON.		
a) 5 Doors and rear swing door station wagon to seat at least 5 adult passengers comfortably.	Yes (mandatory)	
b) Robust body with side opening rear door	Yes	
c) To be fitted with adequate winding/sliding windows for good ventilation and wide view.	Yes	
d) A standard air conditioner fitted.	Yes (mandatory)	
8. BODY AND FINISH.		
a) All exterior body panels made non- corrosive, and all external steel fitting to be galvanized or painted	Yes	
b) Body finish, high gloss current KPLC colour (to be specified by user)	Yes	
c) Fitted with reclining seats	Yes	
d) Vehicle to be painted in Kenya Power paints as specified by the user.	Yes (mandatory)	
9. ELECTRICAL SYSTEM AND INSTRUMENTS.		
a) System voltage, negative earth, with alternator charging	12V, Yes,	
b) Battery capacity approx.	Specify	
c) Full lighting to conform to Kenya Traffic Act	Yes	
d) Standard instruments and gauges (or warning lights) for charging circuit, oil pressure, coolant temperature etc.	Yes,	
10. EQUIPMENT.		
a) Front fender fitted.	Yes	
b) Towing hitch and hook at rear and front respectively	Yes	
c) Sun visors supplied.	Yes	
d) Rear view mirrors supplied 2 No External, 1 No. Internal.	Yes	
e) Spare wheel and external carrier supplied.	Yes, (Mandatory)	
f) Hydraulic (telescopic) jack, wheel brace & standard tools,	Yes	
g) Manufacturer's standard tools, supplied.	Yes	
h) Safety belts provided for all forward facing seats	Yes	
i) Anti-theft alarm fitted	Yes, (Mandatory)	
j) Metallic Hazard Triangles 2No and 1 Kg fire	Yes, (Mandatory)	

extinguisher.		
k) Supply addition Loose Floor rubber mats	Yes	
l) Standard First Aid KS-2094-2007 as per the KEBS specifications.	Yes (Mandatory)	
11. EXTRA EQUIPMENT/ACCESSORIES.		
a) Front and rear lights guard fitted	Optional	
b) Four speaker radio cassette receiver fitted	Yes	
c) Security Alarm and Immobilize fitted	Yes	
d) Any other equipment/accessories supplied/fitted	Specify	
12. WARRANTY & FREE SERVICE.		
a) Specimen of vehicle warranty to be submitted when tendering	Yes	
b) Each vehicle supplied should carry a statement of warranty	Yes (Mandatory)	
c) Vehicle warranty min. 12 Months or 40,000Km whichever comes first	Specify – Months/Kms Kms Yes (mandatory)	
d) Vehicle Free Service on Labour & Parts	Parts (Kms) Labour (Kms)	
13. MANUALS.		
a) All literature in English language	Yes (mandatory)	
b) Repair manuals, supplied	Yes (mandatory)	
c) Parts catalogue /microfiche/CD, supplied	Yes (mandatory)	
d) Drivers handbook supplied	Yes	
e) Service schedule supplied	Yes	
14. OTHER REQUIREMENTS.		
a) Evidence (in form of purchase documents) of minimum 10 units sold and serviced in Kenya.	Yes (mandatory)	
b) Vehicle to be registered by Registrar of Motor Vehicles.	Yes (mandatory)	
c) Vehicle to be inspected by the KPLC Engineer prior to delivery.	Yes (mandatory)	
d) Franchise Holders and dealers who own fully fledged workshops with adequate equipment and facilities.	Yes (Mandatory)	
e) Body construction and all fitments to conform to Kenya Traffic Act CAP 403.	Yes (Mandatory)	
f) Car identity on all Glasses and Lights.	Yes (mandatory)	
g) Indicate name and physical addresses of all Dealers / Agents where Genuine Spares and back-up service can be obtained in at least five (5) major Kenya Power depots (Nairobi, Mombasa, Kisumu, Nyeri, Nakuru and Eldoret).	Attach list Yes (Mandatory)	

LIGHT TRUCK, 4X2, 4.0-5.0 TON, 3800-4500cc, DIESEL.**Quantity: 15****Specification No. KPLC-TPT-03-16-17****Description: Light truck, 4x2, 4.0-5.0 Ton, Constructed to carry wooden poles.****Tenderers' name:.....**

	KPLC requirements.	Tenderer's Offer
1. GENERAL:		
a) Make:	-	
b) Model:	-	
c) Country of origin:	-	
d) Manufacturer's Authorization Supplied	Yes (mandatory)	
e) Manufacturer's Literature & Brochures Supplied.	Yes (mandatory)	
f) Technical Specification Sheet fully completed and submitted.	Yes (mandatory)	
g) A standard production, 4x2, 4.0-5.0 ton payload truck of latest design in robust construction in current production marketed in Kenya.	Yes (mandatory)	
h) Supplied new.	Yes (mandatory)	
i) Designed to heavy duty export specs, capable of operating in tropical conditions over paved and unpaved roads	Yes	
j) Control Forward/Normal	Specify	
k) Suitable for electric Poles transportation as per the supplied Drawing.	Yes (mandatory)	
2. DIMENSIONS AND WEIGHTS		
a) Overall length min.	6,400 mm Yes (mandatory)	
b) Overall width min.	1,900 mm Yes (mandatory)	
c) Overall Height, min.	2,100 mm	
d) Wheel base min	3,400 mm Yes (mandatory)	
e) Cab to rear axle, min.	4,900mm Yes (mandatory)	
f) Kerb (Tare)weight, min.	2,300 Kg Yes (mandatory)	

g) Max. G.V.W. approx.	6,800 Kg Yes (mandatory)	
h) Payload, within the range.	4,000 – 5,000 Kg Yes (mandatory)	
i) Ground Clearance, min.	200 mm Yes (mandatory)	
3. ENGINE		
a) Make	-	
b) Model	-	
c) Country of origin	-	
d) Engine performance curves supplied	Yes (mandatory)	
e) Diesel Engine, water cooled, 4 stroke	Yes (mandatory)	
f) Mode of aspiration (Natural/Turbo)	Specify	
g) Piston displacement within range.	3,800 – 4,500 cc Yes (mandatory)	
h) Number of cylinders, 4/6	Specify	
i) Maximum power output /rpm. Min	85Kw/3500rpm Yes (mandatory)	
j) Maximum torque developed/rpm), min	270Nm/1800rpm Yes (mandatory)	
k) Air cleaner type, disposable/oil bath	Specify	
l) Oil and fuel filter type	Disposable	
m) Average fuel consumption (on full load)	5 Kms/Lit.	
n) Fuel tank capacity, approx.	100 Lts	
4. CLUTCH AND TRANSMISSION		
a) Clutch, dry single plate,	Yes	
b) Clutch system actuation, Hydraulic	Yes	
c) Gearbox, synchromesh	Yes	
d) Number of speeds, min.	5F, 1R (mandatory)	
e) Drive configuration	4x2	
5. BRAKES TYRES AND SUSPENSION		
a) Brakes, hydraulic-pneumatic assisted	Yes	
b) Mechanical parking brake, to act on transmission-rear wheels	Yes	
c) Rear tyres	Dual	
d) Tyres size 215/65R16 locally manufactured	Yes	
e) Optimum tyre size	Specify	
f) Suspension, front and rear heavy duty leaf springs with telescopic shock absorbers at front	Yes	

6. STEERING, CONTROL AND CAB		
a) Right Hand Drive steering	Yes	
b) Power assisted Steering type.	Yes (mandatory)	
c) All steel, spacious front cab to seat 3-passengers comfortably.	Yes	
d) Adjustable driver's seat.	Yes	
e) Seat belts.	Yes	
7. BODY CONSTRUCTION AND FITTINGS		
a) Low sided body with drop side doors as per the given drawing.	Yes (mandatory)	
b) Body cross bearers of pre-stressed channel sections, 100x50x4.5mm equidistantly spaced at a maximum of 500mm apart.	Yes	
c) Suitable size well-seasoned timber runners, with inverted steel section at top, between body frame and chassis.	Yes	
d) Body secured to chassis by U- bolts, diameter 16mm, held in position on wooden V-blocks.	Yes	
e) Body floor fabricated from 3.2mm thick mild steel plate (full width) reinforced at equal distances with box/channel sections.	Yes	
f) Steel platform body, made from mild steel chequered plate of thickness 3.2mm.	Yes (Mandatory)	
g) Reinforced fixed tailgate suitably for carrying poles as per the given drawing.	Yes	
h) Suitable size toolbox to be fitted on to the cargo carrier.	Yes	
i) Body cargo carrier front reinforced suitably to carry heavy loads as per the given drawing.	Yes	
j) Suitable rear mudguards fitted.	Yes	
k) Stone guards fitted for taillights.	Yes	
l) Suitable size ladder fitted for the body cargo carrier.	Yes	
m) Chevrons and reflectors fitted on rear to conform to Kenya traffic act.	Yes	
n) All body steelwork to be thoroughly cleaned before painting. Both internal and exterior finish to be proceeded by one coat (red oxide) and undercoat.	Yes	
o) Truck to be painted in current Kenya Power paints specified by the user.	Yes (Mandatory)	
p) Body construction and all fitments to conform Cap 403 Kenya Traffic Act.	Yes (Mandatory)	
q) Properly safeguard and exposed number plate	Yes (Mandatory)	

8. ELECTRICAL SYSTEM/INSTRUMENTS		
a) System voltage, negative earth	24V	
b) Battery capacity and size	2x12V, 65AH	
c) Full lighting to conform to Cap 403, Subs 23-Kenya Traffic Act	Yes	
d) Standard instruments and gauges (or		
e) Warning lights) for charging circuit, oil Pressure, coolant temperature etc.	Yes	
9. EQUIPMENT		
a) Heavy duty type front fender	Yes	
b) Laminated (safety) windshield	Yes	
c) Sun visors supplied	Yes	
d) Rear view mirrors (external and internal) supplied	Yes	
e) Full size spare Tyre with rim and carrier mounted under truck.	Yes	
f) Hydraulic (telescopic) jack, wheel brace & manufacturer's standard tools,	Yes	
g) Hazard Triangles, First Aid KS-2094-2007 and 1 Kg fire extinguisher cylinder.	Yes, Mandatory	
h) Vehicle to be fitted with electronic speed governor	Yes, Mandatory	
i) Governor to limit maximum speed to 80km/hr and certificate provided.	Yes Mandatory	
j) Governor to be tamper proof	Yes	
k) Governor to be certified by Senior Transport Engineer before fitting	Yes Mandatory	
l) Engine immobilizes system fitted.	Yes	
m) Supply addition Loose Floor rubber mats.	Yes	
10.WARRANTY & FREE SERVICE		
a) Specimen of vehicle warranty to be submitted when tendering	Yes	
b) Each vehicle supplied to carry a statement of warranty	Yes	
c) Vehicle warranty duration min. 12 Months	Specify (months)	
d) 40,000Km whichever occurs first	Specify (Kms) (mandatory)	
e) Vehicle Free Service on Labour& Parts	Parts (Kms)	
	Labour (Kms)	
11.MANUALS		
a) All literature in the English language	Yes (mandatory)	
b) Repair manuals, supplied	Yes (mandatory)	
c) Parts catalogue/microfiche/CD, supplied	Yes (mandatory)	

d) Drivers handbook supplied	Yes	
e) Service schedule supplied	Yes	
12. OTHER REQUIREMENTS		
a) Manufacturer's authorization supplied when tendering.	Yes (mandatory)	
b) Evidence (in form of purchase documents) of minimum 10 units sold and serviced in Kenya.	Yes (mandatory)	
c) Vehicle to be registered by Registrar of Motor Vehicles	Yes (mandatory)	
d) Vehicle to be inspected by the KPLC Engineer prior to delivery	Yes (mandatory)	
e) Franchise Holders and dealers who own fully fledged workshops with adequate equipment and facilities.	Yes (Mandatory)	
f) Body construction and all fitments to conform to Kenya Traffic Act CAP 403.	Yes (Mandatory)	
g) Chevrons and reflectors fitted on rear to conform to Kenya traffic act		
h) Car identity on all Glasses and Lights	Yes	
i) Indicate name and physical addresses of all Dealers / Agents where Genuine Spares and back-up service can be obtained in at least five (5) major Kenya Power depots (Nairobi, Mombasa, Kisumu, Nyeri, Nakuru and Eldoret).	Attach list Yes (Mandatory)	

LIGHT TRUCK, 4X2, 4.0-5.0 TON, 3800-4500cc, DIESEL.

Quantity: 21

Specification No. **KPLC-TPT-04-16-17**

Description: Light truck, 4x2, 4.0-5.0 Ton, Low sided body, Constructed suitably for fitting street lighting equipment.

Tenderers' name:.....

	KPLC requirements.	Tenderer's Offer
1. GENERAL:		
a) Make:	-	
b) Model:	-	
c) Country of origin:	-	
d) Manufacturer's Authorization Supplied	Yes (mandatory)	
e) Manufacturer's Literature & Brochures Supplied.	Yes (mandatory)	
f) Technical Specification Sheet fully completed and submitted.	Yes (mandatory)	
g) A standard production, 4x2, 4.0-5.0 ton payload truck of latest design in robust construction in current production marketed in Kenya.	Yes (mandatory)	
h) Supplied new.	Yes (mandatory)	
i) Designed to heavy duty export specs, capable of operating in tropical conditions over paved and unpaved roads	Yes	
j) Control Forward/Normal	Specify	
k) Suitable for electric Poles transportation as per the supplied Drawing.	Yes (mandatory)	
2. DIMENSIONS AND WEIGHTS		
a) Overall length min.	6,400 mm Yes (mandatory)	
b) Overall width min.	1,900 mm Yes (mandatory)	
c) Overall Height, min.	2,100 mm	
d) Wheel base min	3,400 mm Yes (mandatory)	
e) Cab to rear axle, min.	4,900mm Yes (mandatory)	
f) Kerb (Tare)weight, min.	2,300 Kg Yes (mandatory)	

g) Max. G.V.W, within range	7000-7500 Kg Yes (mandatory)	
h) Payload, within the range.	4,000 – 5,000 Kg Yes (mandatory)	
i) Ground Clearance, min.	200 mm Yes (mandatory)	
3. ENGINE		
a) Make	-	
b) Model	-	
c) Country of origin	-	
d) Engine performance curves supplied	Yes (mandatory)	
e) Diesel Engine, water cooled, 4 stroke	Yes (mandatory)	
f) Mode of aspiration (Natural/Turbo)	Specify	
g) Piston displacement within range.	3,800 – 4,500 cc Yes (mandatory)	
h) Number of cylinders, 4/6	Specify	
i) Maximum power output /rpm min.	85Kw/3500rpm Yes (mandatory)	
j) Maximum torque developed/rpm), min	270Nm/1800rpm Yes (mandatory)	
k) Air cleaner type, disposable/oil bath	Specify	
l) Oil and fuel filter type	Disposable	
m) Average fuel consumption (on full load)	5 Kms/Lit.	
n) Fuel tank capacity, approx.	100 Lts	
4. CLUTCH AND TRANSMISSION		
a) Clutch, dry single plate,	Yes	
b) Clutch system actuation, Hydraulic	Yes	
c) Gearbox, synchromesh	Yes	
d) Number of speeds, min.	5F, 1R (mandatory)	
e) Drive configuration	4x2	
5. BRAKES TYRESAND SUSPENSION		
a) Brakes, hydraulic-pneumatic assisted	Yes	
b) Mechanical parking brake, to act on transmission-rear wheels	Yes	
c) Rear tyres	Dual	
d) Tyres size 215/65R16 locally manufactured	Yes	
e) Optimum tyre size	Specify	
f) Suspension, front and rear heavy duty leaf springs with telescopic shock absorbers at front	Yes	

6. STEERING, CONTROL AND CAB		
a) Right Hand Drive steering	Yes	
b) Power assisted Steering type.	Yes (mandatory)	
c) All steel, spacious front cab to seat 3-passengers comfortably.	Yes	
d) Adjustable driver's seat.	Yes	
e) Seat belts.	Yes	
7. BODY CONSTRUCTION AND FITTINGS		
a) Low sided body with drop side doors suitable for fitting hydraulic street lighting equipment.	Yes (mandatory)	
b) Body cross bearers of pre-stressed channel sections, 100x50x4.5mm equidistantly spaced at a maximum of 500mm apart.	Yes	
c) Suitable size well-seasoned timber runners, with inverted steel section at top, between body frame and chassis.	Yes	
d) Body secured to chassis by U- bolts, diameter 16mm, held in position on wooden V-blocks.	Yes	
e) Body floor fabricated from 3.2mm thick mild steel plate (full width) reinforced at equal distances with box/channel sections.	Yes	
f) Steel platform body, made from mild steel chequered plate of thickness 3.2mm.	Yes (Mandatory)	
g) Suitable size toolbox to be fitted on to the cargo carrier.	Yes	
h) Body cargo carrier front reinforced suitably to carry heavy loads as per the given drawing.	Yes	
i) Suitable rear mudguards and Stone guards fitted for taillights	Yes	
j) Suitable size ladder fitted for the body cargo carrier.	Yes	
k) Chevrons and reflectors fitted on rear to conform to Kenya traffic act.	Yes	
l) All body steelwork to be thoroughly cleaned before painting. Both internal and exterior finish to be proceeded by one coat (red oxide) and undercoat.	Yes	
m) Truck to be painted in current Kenya Power paints specified by the user.	Yes (Mandatory)	
n) Properly safeguard and exposed number plate	Yes (Mandatory)	
8. ELECTRICAL SYSTEM/INSTRUMENTS		
a) System voltage, negative earth	24V	
b) Battery capacity and size	2x12V, 65AH	
c) Full lighting to conform to Cap 403, Subs 23-Kenya Traffic Act	Yes	

d) Standard instruments and gauges (or	Yes	
e) Warning lights) for charging circuit, oil		
Pressure, coolant temperature etc.	Yes	
9. EQUIPMENT		
a) Heavy duty type front fender	Yes	
b) Laminated (safety) windshield	Yes	
c) Sun visors supplied	Yes	
d) Rear view mirrors (external and internal) supplied	Yes	
e) Full size spare Tyre with rim and carrier mounted under truck.	Yes	
f) Hydraulic (telescopic) jack, wheel brace & manufacturer's standard tools,	Yes	
g) Hazard Triangles, First Aid KS-2094-2007 and 1 Kg fire extinguisher cylinder.	Yes, Mandatory	
h) Vehicle to be fitted with electronic speed governor	Yes, Mandatory	
i) Governor to limit maximum speed to 80km/hr and certificate provided.	Yes Mandatory	
j) Governor to be tamper proof	Yes	
k) Governor to be certified by Senior Transport Engineer before fitting	Yes Mandatory	
l) Engine immobilizes system fitted.	Yes	
m) Supply addition Loose Floor rubber mats.	Yes	
10.WARRANTY & FREE SERVICE		
a) Specimen of vehicle warranty to be submitted when tendering	Yes (Mandatory)	
b) Each vehicle supplied to carry a statement of warranty	Yes	
c) Vehicle warranty duration min. 12 Months	Specify (Months)	
d) 40,000Km whichever occurs first	Specify (Kms) (mandatory)	
e) Vehicle Free Service on Labour& Parts	Parts (Kms)	
	Labour (Kms)	
11.MANUALS		
a) All literature in the English language	Yes (Mandatory)	
b) Repair manuals, supplied	Yes (Mandatory)	
c) Parts catalogue/microfiche/CD, supplied	Yes (Mandatory)	
d) Drivers handbook supplied	Yes	
e) Service schedule supplied	Yes	

12. OTHER REQUIREMENTS		
a) Manufacturer's authorization supplied when tendering.	Yes (Mandatory)	
b) Evidence (in form of purchase documents) of minimum 10 units sold and serviced in Kenya.	Yes (Mandatory)	
c) Vehicle to be registered by Registrar of Motor Vehicles	Yes (Mandatory)	
d) Vehicle to be inspected by the KPLC Engineer prior to delivery	Yes (Mandatory)	
e) Franchise Holders and dealers who own fully fledged workshops with adequate equipment and facilities.	Yes (Mandatory)	
f) Body construction and all fitments to conform to Kenya Traffic Act CAP 403.	Yes (Mandatory)	
g) Chevrons and reflectors fitted on rear to conform to Kenya traffic act	Yes	
h) Car identity on all Glasses and Lights	Yes	
i) Indicate name and physical addresses of all Dealers / Agents where Genuine Spares and back-up service can be obtained in at least five (5) major Kenya Power depots (Nairobi, Mombasa, Kisumu, Nyeri, Nakuru and Eldoret).	Attach list Yes (Mandatory)	

HYDRAULIC HIGH LIFTING PLATFORM.

QUANTITY: 21

Specification No. **KPLC-TPT-05-16-17**

Description: Hydraulic High Lift Platform (Street lighting bucket).

Tenderers' name.....

	KPLC Requirements	
1. GENERAL.		
a) Make.	-	
b) Model.	-	
c) Country of origin.	-	
d) Manufacturer's Authorization Supplied	Yes (mandatory)	
e) Manufacturer's Literature & Brochures Supplied.	Yes (mandatory)	
f) Technical Specification Sheet fully completed and submitted.	Yes (mandatory)	
g) A standard production hydraulic high lifting platform, of latest design in the class, robust construction in current production and marketed in Kenya.	Yes (mandatory)	
h) Supplied new.	Yes (mandatory)	
i) Designed for heavy duty specifications, capable of operating in tropical conditions.	Yes	
2. DESIGN AND DIMENSIONS.		
a) Designed to export specifications suitable for fitting onto a Light truck.	Yes	
b) Working height max., 15.0m	Yes(mandatory)	
c) Maximum lifting capacity, 220kgs.	Yes(mandatory)	
d) Hydraulically operated landing legs complete with control valves.	Yes(mandatory)	
e) Swivel action angle minimum unlimited angle.	Yes(mandatory)	
f) Operator controllable bucket.	Yes	
g) Minimum bucket operator insulation.	1000V Yes(mandatory)	
h) Hydraulically operated A-frame stabilizers for safety operation-4 units.	Yes(mandatory)	
i) Emergency operation from the base.	Yes	
j) High performance hydraulic seals.	Yes (mandatory)	
k) Rated P.T.O pump output power min.	200 bars	

l) Suitable for high lifting on street lighting.	Yes	
m) Operations via Power take-off (P.T.O) pump with electro-pneumatic engage.	Yes(mandatory)	
n) Decking chequered plate.	Yes	
o) Guard rail 2'' pipe all round	Yes	
p) Outreach 5m, min.	Yes	
q) Unit to be installed and integrated to supplied Light truck Cab chassis	Yes	
r) Tool box to be provided	Yes	
s) Platform to meet all relevant International standards.	Yes(mandatory)	
Quantity two (2No) LED flood light provided (direction adjustable) fitted on top of truck body headboard on each side, individually controlled.	Yes(mandatory)	
3. CAGE:		
a) Number of persons to accommodate, max.	2No.Yes (mandatory)	
b) Side panels at bottom of cage to prevent equipment spillage.	Yes	
c) GRP Glass reinforced fiberglass bucket	Yes	
d) Hydraulics controls from cage	Yes	
e) System to fully deploy within 40 seconds	Yes	
f) Cage to fully insulated to min.1000V	Yes (mandatory)	
g) Integrated diagnostic system, Hour meter and hydraulic pressure engaging fitted (Attach catalogue)	Yes (mandatory)	
4. HIGH VOLTAGE SYSTEM.		
a) P.T.O engaging High voltage alert system fitted	Yes	
b) Nominal operating -5°C to +55°C	Yes	
c) Sound warning tone-85db	Yes	
d) Visual warning	Yes	
e) Detection range-50m	Yes	
5. WARRANTY & FREE SERVICE.		
a) Specimen of platform warranty to be submitted when tendering	Yes	
b) Each platform supplied should carry a		
c) statement of warranty and test certificate	Yes (mandatory)	
d) PTO pump manufacturers authorization	Yes(mandatory)	
e) Platform warranty min., 12 Months or	Specify months	
f) Platform Free Service on Labour& Parts	Parts (Hrs)	
6. MANUALS:		
a) All literature in the English language	Yes (mandatory)	
b) Maintenance & service manuals supplied	Yes (mandatory)	

c) Parts catalogue supplied	Yes (mandatory)	
d) Operators handbook supplied	Yes	
e) Service schedule supplied	Yes	
7. OTHER REQUIREMENTS.		
a) Manufacturer's authorization supplied when tendering.	Yes (mandatory)	
b) Evidence (in form of purchase documents) of minimum 10 units sold and serviced in Kenya.	Yes (Mandatory)	
c) Franchise Holders and dealers who own fully fledged workshop(s) equipment with adequate facilities.	Yes (Mandatory)	
d) Body construction and all fitments to conform to Kenya traffic act and to have a certificate from vehicle inspection centre.	Yes (mandatory)	
e) Crane to be inspected by the Senior Transport Engineer prior to delivery.	Yes (mandatory)	
f) Flat form to be fitted onto the supplied Light truck.	Yes (mandatory)	
g) Indicate name and physical addresses of all Dealers/Agents where Genuine Spares and back-up service can be obtained in at least one major Kenya Power depots (Nairobi, Mombasa, Kisumu, Nyeri, Nakuru and Eldoret).	Attach list – Yes (mandatory)	

MEDIUM TRUCK, 4X2, 7.0 – 8.0 TON, CAB CHASSIS.

QUANTITY: 24

SPECIFICATION No. **KPLC-TPT-06-16-17**

DRAWING NO: S.K No. 9366 Sheet C2

DESCRIPTION: 7-8 Ton, 4x2, Medium truck, Cab chassis constructed to carry poles complete with crew cab.

TENDERERS'S Name.....

	KPLC Requirements	Tenderer's Offer
1. GENERAL:		
a) Make:		
b) Model:	-	
c) Country of origin:	-	
d) Manufacturer's Authorization Supplied	Yes (mandatory)	
e) Manufacturer's Literature & Brochures Supplied.	Yes (mandatory)	
f) Technical Specification Sheet fully completed and submitted.	Yes (mandatory)	
g) A standard production, 4x2, diesel utility medium truck of latest design in the class, robust construction in current production and marketed in Kenya.	Yes (mandatory)	
h) Supplied new.	Yes (mandatory)	
i) Control Forward/Normal	Specify	
j) Designed for heavy duty specifications, capable of operating in tropical conditions of mud and dust.	Yes (mandatory)	
k) Most suitable for operating on both "on and off" road conditions.	Yes (mandatory)	
l) Most suitable for personnel and cargo transportation as per the supplied drawing sheet.	Yes (mandatory)	

2. DIMENSIONS AND WEIGHTS		
a) Overall length, min.	8,500 mm (mandatory)	
b) Overall width approx.	2,400 mm	
c) Overall height min.	2,500 mm	
d) Wheelbase, Min.	5,000 mm (mandatory)	
e) Length of chassis after Cab, min.	6,000 mm (mandatory)	
f) Kerb weight (excluding body), min.	3,500 Kg (mandatory)	
g) Max. G.V.W approx.	13,500 Kg (mandatory)	
h) Payload, within range.	7,000 – 8,500 Kg Yes, (mandatory)	
i) Permissible front (steering) axle load, max.	5,500 Yes (mandatory)	
j) Permissible rear (for dual wheels) axle load, max.	8,500kg Yes (mandatory)	
k) Ground clearance, min.	250 mm (mandatory)	
3. ENGINE.		
a) Make	-	
b) Model	-	
c) Country of origin	-	
d) Engine performance curves supplied	Yes (mandatory)	
e) Diesel Engine, water cooled, 4 stroke	Yes, (mandatory)	
f) Mode of aspiration. (Natural/Turbo)	Specify	
g) Piston displacement, within range.	7,000cc – 8,500 cc Yes(mandatory)	
h) Number of cylinders, min.	6 No. Yes(mandatory)	
i) Maximum power output /rpm, min	160HP/3000rpm(mandato ry)	
j) Maximum torque developed/rpm), min	440Nm/1800rpm (mandatory)	

k) Air cleaner type, disposable/oil bath	Specify	
l) Oil and fuel filter type	Disposable	
m) Average fuel consumption (on full load)	Specify Kms/lit	
n) Fuel tank capacity, min.	200 Lts	
o) Extra fuel tank fitted capacity	Specify	
4. CLUTCH AND TRANSMISSION.		
a) Clutch, dry single plate,	Yes	
b) Clutch system actuation, Hydraulic	Yes	
c) Gearbox, synchromesh	Yes	
d) Number of speeds, min.	5F, 1R	
e) Drive configuration	4x2 Yes (mandatory)	
5. BRAKES AND TYRES.		
a) Brakes, hydraulic-pneumatic assisted	Yes	
b) Mechanical parking brake, to act on transmission	Yes	
c) Rear tyres	Dual	
d) Tyres size locally manufactured	Yes,(Mandatory)	
e) Optimum tyre size	Specify	
f) Suspension, front and rear heavy duty leaf springs with telescopic shock absorbers at front	Yes	
6. STEERING, CONTROL AND CAB.		
a) Right Hand Drive steering	Yes	
b) Power assisted steering system.	Yes (mandatory)	

7. BODY CONSTRUCTION AND FITTINGS.		
a) Payload track constructed suitably to carry poles and general cargo over paved and unpaved (rough) roads as per the attached drawing.	Yes (mandatory)	
b) Crew Cabin - All steel, spacious cab to seat 9 passengers comfortably complete with seat belts as per attached drawing.	Yes (mandatory)	
c) Crew cab to contained toolbox/reinforced seat bed as per the attached drawing.	Yes (mandatory)	
d) d) Body cross bearers of pre-stressed channel sections, 100x50x4.5mm equidistantly spaced at a maximum of 500mm apart.	Yes	
e) e) Suitable size well-seasoned timber runners, with inverted steel section at top, between body frame and chassis.	Yes	
a) Body secured to chassis by U-bolts, diameter 16mm, held in position on wooden V-blocks.	Yes (mandatory)	
b) Body floor fabricated from 3.2mm thick mild steel plate (full width) reinforced at equal distances with box/channel sections.	Yes	
c) Steel platform body, made from mild steel chequered plate of thickness 3.2mm.	Yes (mandatory)	
d) Fixed tailgate suitably reinforced to carry heavy loads as per the given drawing.	Yes (mandatory)	
e) Drop sides in two sections as per the given drawing.	Yes (mandatory)	
f) Suitable size toolbox, fitted under body on the left hand side.	Yes	
g) Suitable rear mudguards fitted.	Yes	
h) Stone guards fitted for taillights, properly safeguard expose No. plate	Yes (Mandatory)	
i) Suitable size ladder fitted for the crew cab and the cargo carrier.	Yes	
j) Chevrons and reflectors fitted on rear to conform to Kenya traffic act.	Yes	

k) Wide view sliding windows on both sides of the crew cabin and Rear crew cabin	Yes	
l) All body steelwork to thoroughly clean before painting. Both internal and exterior finish to be proceeded by one coat (red oxide) and undercoat.	Yes	
m) Body construction and all fitments to conform Cap 403 Kenya Traffic Act.	Yes (Mandatory)	
8. ELECTRICAL SYSTEM/INSTRUMENTS.		
a) System voltage, negative earth	24V Yes	
b) Battery capacity and size	Specify	
c) Full lighting to conform to Kenya Traffic Act Cap 403.	Yes	
d) Standard instruments and gauges (or warning lights) for charging circuit, oil pressure, coolant temperature etc.	Yes	
9. EQUIPMENT.		
a) Heavy duty type front fender	Yes	
b) Laminated (safety) windshield	Yes	
c) Sun visors supplied	Yes	
d) Rear view mirrors (external both sides and internal) supplied	Yes	
e) Full size spare tyre with rim and carrier mounted under truck.	Yes	
f) Hydraulic (telescopic) jack, wheel brace & manufacturer's standard tools,	Yes	
g) Any other equipment (or accessories) supplied	Specify	
h) Vehicle to be fitted with electronic speed governor.	Yes (mandatory)	
i) Governor to limit speed maximum to 80km/hr certificate provided.	Yes (mandatory)	
j) Governor to be tamper proof (sealed)	Yes	

k) Governor to be certified by Transport Engineer before fitting.	Yes (mandatory)	
l) Engine immobilizer system fitted.	Yes (mandatory)	
m) Hazard Triangles, Std First Aid kit KS-2094-2007 and fire extinguisher.	Yes (mandatory)	
n) Supply additional Loose Floor rubber mats	Yes (mandatory)	
10. WARRANTY.		
a) Specimen of vehicle warranty to be submitted when tendering	Yes	
b) Each vehicle supplied to carry a statement of warranty	Yes	
c) Vehicle warranty duration min. 12 Months 40,000Km.	Specify Months	
d) Whichever occurs first	Specify Kms (mandatory)	
e) Vehicle Free Service on Labour & Parts	Parts (Kms)	
	Labour (Kms)	
11. MANUALS.		
a) All literature in the English language	Yes (mandatory)	
b) Repair manuals, supplied in hardcopy/CD	Yes (mandatory)	
c) Parts catalogue supplied in hardcopy/CD,	Yes (mandatory)	
d) Drivers handbook supplied	Yes (mandatory)	
e) Service schedule supplied	Yes (mandatory)	
12. OTHER REQUIREMENTS		
a) Manufacturer's authorization supplied when tendering.	Yes (mandatory)	
b) Evidence (in form of purchase documents) of minimum 10 units sold and serviced in Kenya.	Yes (mandatory)	
c) Vehicle to be registered by Registrar of Motor Vehicles	Yes (mandatory)	

d) Vehicle to be inspected by the KPLC Engineer prior to delivery	Yes (mandatory)	
e) Franchise Holders and dealers who own fully fledged workshops with adequate equipment and facilities.	Yes (Mandatory)	
f) Body construction and all fitments to conform to Kenya Traffic Act CAP 403.	Yes (Mandatory)	
g) Chevrons and reflectors fitted on rear to conform to Kenya traffic act.	Yes	
h) Car identity on all Glasses and Lights	Yes	
i) Indicate name and physical addresses of all Dealers/Agents where Genuine Spares and back-up service can be obtained in at least four (5) major Kenya Power depots (Nairobi, Mombasa, Kisumu, Nyeri, Nakuru and Eldoret).	Attach list – Yes (mandatory)	

MEDIUM TRUCK, 4X2, 7.0 – 8.0 TON, CAB CHASSIS.**QUANTITY: 2****SPECIFICATION No. KPLC-TPT-07-16-17****DRAWING NO: S.K No. 9366 Sheet C2****DESCRIPTION: 7-8 Ton, 4x2, Medium truck, Cab chassis Medium sided body (Stores).****TENDERERS'S Name.....**

	KPLC Requirements	Tenderer's Offer
1. GENERAL:		
m) Make:		
n) Model:	-	
o) Country of origin:	-	
p) Manufacturer's Authorization Supplied	Yes (mandatory)	
q) Manufacturer's Literature & Brochures Supplied.	Yes (mandatory)	
r) Technical Specification Sheet fully completed and submitted.	Yes (mandatory)	
s) A standard production, 4x2, diesel utility medium truck of latest design in the class, robust construction in current production and marketed in Kenya.	Yes (mandatory)	
t) Supplied new.	Yes (mandatory)	
u) Control Forward/Normal	Specify	
v) Designed for heavy duty specifications, capable of operating in tropical conditions of mud and dust.	Yes (mandatory)	
w) Most suitable for operating on both "on and off" road conditions.	Yes (mandatory)	
x) Most suitable for personnel and cargo transportation as per the supplied drawing sheet.	Yes (mandatory)	

2. DIMENSIONS AND WEIGHTS		
l) Overall length, min.	8,500 mm (mandatory)	
m) Overall width approx.	2,400 mm	
n) Overall height min.	2,500 mm	
o) Wheelbase, Min.	5,000 mm (mandatory)	
p) Length of chassis after Cab, min.	6,000 mm (mandatory)	
q) Kerb weight (excluding body), min.	3,500 Kg (mandatory)	
r) Max. G.V.W approx.	13,500 Kg (mandatory)	
s) Payload, within range.	7,000 – 8,500 Kg Yes, (mandatory)	
t) Permissible front (steering) axle load, max.	5,500 Yes (mandatory)	
u) Permissible rear (for dual wheels) axle load, max.	8,500kg Yes (mandatory)	
v) Ground clearance, min.	250 mm (mandatory)	
3. ENGINE.		
p) Make	-	
q) Model	-	
r) Country of origin	-	
s) Engine performance curves supplied	Yes (mandatory)	
t) Diesel Engine, water cooled, 4 stroke	Yes, (mandatory)	
u) Mode of aspiration. (Natural/Turbo)	Specify	
v) Piston displacement, within range.	7,000cc – 8,500 cc Yes(mandatory)	
w) Number of cylinders, min.	6 No. Yes(mandatory)	
x) Maximum power output /rpm, approx. min	160HP/3000rpm Yes (mandatory)	

y) Maximum torque developed/rpm), min	440Nm/1800rpm(mandatory)	
z) Air cleaner type, disposable/oil bath	Specify	
aa) Oil and fuel filter type	Disposable	
bb) Average fuel consumption (on full load)	Specify Kms/lit	
cc) Fuel tank capacity, min.	200 Lts	
dd) Extra fuel tank fitted capacity	Specify	
4. CLUTCH AND TRANSMISSION.		
f) Clutch, dry single plate,	Yes	
g) Clutch system actuation, Hydraulic	Yes	
h) Gearbox, synchromesh	Yes	
i) Number of speeds, min.	5F, 1R	
j) Drive configuration	4x2 Yes (mandatory)	
5. BRAKES AND TYRES.		
g) Brakes, hydraulic-pneumatic assisted	Yes	
h) Mechanical parking brake, to act on transmission	Yes	
i) Rear tyres	Dual	
j) Tyres size locally manufactured	Yes,(Mandatory)	
k) Optimum tyre size	Specify	
l) Suspension, front and rear heavy duty leaf springs with telescopic shock absorbers at front	Yes	
6. STEERING, CONTROL AND CAB.		
c) Right Hand Drive steering	Yes	
d) Power assisted steering system.	Yes (mandatory)	

7. BODY CONSTRUCTION AND FITTINGS.		
a) Payload track constructed suitably to carry Heavy general cargo over paved and unpaved (rough) roads as per the attached drawing.	Yes (mandatory)	
b) Body cross bearers of pre-stressed channel sections, 100x50x4.5mm equidistantly spaced at a maximum of 500mm apart.	Yes	
c) Suitable size well-seasoned timber runners, with inverted steel section at top, between body frame and chassis.	Yes	
d) Body secured to chassis by U-bolts, diameter 16mm, held in position on wooden V-blocks.	Yes (mandatory)	
e) Body floor fabricated from 3.2mm thick mild steel plate (full width) reinforced at equal distances with box/channel sections.	Yes	
f) Steel platform body, made from mild steel chequered plate of thickness 3.2mm.	Yes (mandatory)	
g) Drop tailgate suitably reinforced to carry heavy loads as per the given drawing.	Yes (mandatory)	
h) Drop sides in all sections as per the given drawing.	Yes (mandatory)	
i) Suitable size toolbox, fitted under body on the left hand side.	Yes	
j) Suitable rear mudguards fitted.	Yes	
k) Stone guards fitted for taillights, properly safeguard expose No. plate	Yes (Mandatory)	
l) Suitable size ladder fitted for the crew cab and the cargo carrier.	Yes	
m) Chevrons and reflectors fitted on rear to conform to Kenya traffic act.	Yes	
n) All body steelwork to thoroughly clean before painting. Both internal and exterior finish to be proceeded by one coat (red oxide) and undercoat.	Yes	
o) Body construction and all fitments to conform Cap 403 Kenya Traffic Act.	Yes (Mandatory)	

8. ELECTRICAL SYSTEM/INSTRUMENTS.		
a) System voltage, negative earth	24V Yes	
b) Battery capacity and size	Specify	
c) Full lighting to conform to Kenya Traffic Act Cap 403.	Yes	
d) Standard instruments and gauges (or warning lights) for charging circuit, oil pressure, coolant temperature etc.	Yes	
9. EQUIPMENT.		
a) Heavy duty type front fender	Yes	
b) Laminated (safety) windshield	Yes	
c) Sun visors supplied	Yes	
d) Rear view mirrors (external both sides and internal) supplied	Yes	
e) Full size spare tyre with rim and carrier mounted under truck.	Yes	
f) Hydraulic (telescopic) jack, wheel brace & manufacturer's standard tools,	Yes	
g) Any other equipment (or accessories) supplied	Specify	
h) Vehicle to be fitted with electronic speed governor.	Yes (mandatory)	
i) Governor to limit speed maximum to 80km/hr certificate provided.	Yes (mandatory)	
j) Governor to be tamper proof (sealed)	Yes	
k) Governor to be certified by Transport Engineer before fitting.	Yes (mandatory)	
l) Engine immobilizer system fitted.	Yes (mandatory)	
m) Hazard Triangles, Std First Aid kit KS-2094-2007 and fire extinguisher.	Yes (mandatory)	
n) Supply additional Loose Floor rubber mats	Yes (mandatory)	

10. WARRANTY.		
a) Specimen of vehicle warranty to be submitted when tendering	Yes	
b) Each vehicle supplied to carry a statement of warranty	Yes	
c) Vehicle warranty duration min. 12 Months 40,000Km.	Specify Months	
d) Whichever occurs first	Specify Kms (mandatory)	
e) Vehicle Free Service on Labour & Parts	Parts (Kms)	
	Labour (Kms)	
11. MANUALS.		
a) All literature in the English language	Yes (mandatory)	
b) Repair manuals, supplied in hardcopy/CD	Yes (mandatory)	
c) Parts catalogue supplied in hardcopy/CD,	Yes (mandatory)	
d) Drivers handbook supplied	Yes (mandatory)	
e) Service schedule supplied	Yes (mandatory)	
12. OTHER REQUIREMENTS		
a) Manufacturer's authorization supplied when tendering.	Yes (mandatory)	
b) Evidence (in form of purchase documents) of minimum 10 units sold and serviced in Kenya.	Yes (mandatory)	
c) Vehicle to be registered by Registrar of Motor Vehicles	Yes (mandatory)	
d) Vehicle to be inspected by the KPLC Engineer prior to delivery	Yes (mandatory)	
e) Franchise Holders and dealers who own fully fledged workshops with adequate equipment and facilities.	Yes (Mandatory)	
f) Body construction and all fitments to conform to Kenya Traffic Act CAP 403.	Yes (Mandatory)	
g) Chevrons and reflectors fitted on rear to conform to	Yes	

Kenya traffic act.		
h) Car identity on all Glasses and Lights	Yes	
i) Indicate name and physical addresses of all Dealers/Agents where Genuine Spares and back-up service can be obtained in at least four (5) major Kenya Power depots (Nairobi, Mombasa, Kisumu, Nyeri, Nakuru and Eldoret).	Attach list – Yes (mandatory)	

MEDIUM TRUCK, 4X2, 7.0 – 8.0 TON, CAB CHASSIS**Quantity: 17****Specification NO.KPLC-TPT-08-16-17****Description: Medium truck 4x2, 7.0-8.0 Ton cab chassis complete with low sided body**

	KPLC Requirements	Tenderer's offer
1. GENERAL.		
a) Make	-	
b) Model	-	
c) Country of origin	-	
d) Manufacturer's Authorization Supplied	Yes (mandatory)	
e) Manufacturer's Literature & Brochures Supplied.	Yes (mandatory)	
f) Technical Specification Sheet fully completed and submitted.	Yes (mandatory)	
g) A standard production, 4x2, diesel utility medium truck of latest design in the class, robust construction in current production and marketed in Kenya.	Yes (mandatory)	
h) Supplied new.	Yes (mandatory)	
i) Control Forward/Normal	Specify	
j) Designed for heavy duty specifications, capable of operating in tropical conditions of mud and dust.	Yes (mandatory)	
k) Most suitable for operating on both "on and off" road conditions.	Yes (mandatory)	
l) Most suitable for fitting operating high lifting crane and cargo transportation as per the supplied drawing sheet.	Yes (mandatory)	
2. DIMENSIONS AND WEIGHTS.		
a) Overall length, min.	7,400 mm (mandatory)	
b) Overall width approx.	2,400 mm	
c) Overall height min.	2,500 mm	
d) Wheel base min.	4,200 mm (mandatory)	
e) Length of chassis after Cab, min.	5,300 mm (mandatory)	
f) Kerb weight min.	3,500 Kg (mandatory)	
g) Max. G.V.W. Approx.	13,500 Kg	

h) Payload, within range.	7,000 – 8,000 Kg (mandatory).	
i) Permissible front (steering) axle load, max	5,500kg (mandatory)	
j) Permissible rear (for dual wheels) axle load, max	8,500Kg (mandatory)	
k) Ground clearance, min	250 mm (mandatory)	
3. ENGINE.		
a) Make	-	
b) Model	-	
c) Country of origin	-	
d) Engine performance curves supplied	Yes	
e) Diesel Engine, water cooled, 4 stroke	Yes, (mandatory)	
f) Mode of aspiration. (Natural/Turbo)	Specify	
g) Piston displacement, within range.	7,000cc – 8,500 cc Yes(mandatory)	
h) Number of cylinders, min.	6 No. (mandatory)	
i) Maximum power output /rpm, min	180hp/3,000rpm Yes (mandatory)	
j) Maximum torque developed/rpm), min	500Nm/1800rpm Yes (mandatory)	
k) Air cleaner type, disposable/oil bath	Specify	
l) Oil and fuel filter type	Disposable	
m) Average fuel consumption (on full load)	Specify Kms/lit	
n) Fuel tank capacity, min.	200 Lts	
o) Extra fuel tank fitted capacity	Specify	
4. CLUTCH AND TRANSMISSION.		
a) Clutch, dry single plate,	Yes	
b) Clutch system actuation, Hydraulic	Yes	
c) Gearbox, synchromesh	Yes	
d) Number of speeds, min.	5F, 1R(mandatory)	
e) Drive configuration	4x2 Yes (mandatory)	
5. BRAKES AND TYRES.		
a) Brakes, hydraulic-pneumatic assisted	Yes (mandatory)	
b) Mechanical parking brake, to act on transmission	Yes	
c) Rear tyres	Dual	
d) Tyres size locally manufactured	Yes	
e) Optimum tyre size	Specify	
f) Suspension, front and rear heavy duty leaf springs with telescopic shock absorbers at front	Yes	

6. STEERING, CONTROL AND CAB.		
a) Right Hand Drive steering	Yes	
b) Steering type Manual/assisted	Power steering (Mandatory)	
c) Seat belts	Yes (Mandatory)	
7. BODY CONSTRUCION.		
a) Low-sided body as per the given drawing.	Yes (mandatory)	
b) Body cross bearers of pre-stressed channel sections, 100x50x4.5mm equidistantly spaced at a maximum of 500mm apart.	Yes	
c) Suitable size well-seasoned timber runners, with inverted steel section at top, between body frame and chassis.	Yes	
d) Body secured to chassis by U-bolts, diameter 16mm, held in position on wooden V-blocks.	Yes	
e) Body floor fabricated from 3.2mm thick mild steel plate (full width) reinforced at equal distances with box/channel sections.	Yes	
f) Steel platform body, made from mild steel chequered plate of thickness 3.2mm.	Yes	
g) Dropped tailgate and sides suitably reinforced.	Yes	
h) Suitable size toolbox to be fitted under body on the right hand side.	Yes	
i) Fixed cargo carrier clear of cab to create suitable space for fitting crane machine as per the given drawing.	Yes	
j) Suitable rear mudguards fitted.	Yes	
k) Stone guards fitted for taillights.	Yes	
l) Suitable size ladder fitted for the body cargo carrier.	Yes	
m) Chevrons and reflectors fitted on rear to conform to Kenya traffic act.	Yes	
n) All body steelwork to be thoroughly cleaned before painting. Both internal and exterior finish to be proceeded by one coat (red oxide) and undercoat.	Yes	
o) Truck to be painted in current Kenya Power paints as specified by the user.	Yes (Mandatory)	
p) Body construction and all fitments to conform Cap 403 Kenya Traffic Act.	Yes (Mandatory)	
q) Properly safeguard and expose number plate	Yes (Mandatory)	
8. ELECTRICAL SYSTEM/INSTRUMENTS.		
a) System voltage, negative earth	24V Yes	
b) Battery capacity and size	Specify	
c) Full lighting to conform to Cap 403, subs 23-Kenya Traffic Act	Yes	

d) Standard instruments and gauges (or warning lights) for charging circuit, oil pressure, coolant temperature etc.	Yes	
9. EQUIPMENT.		
a) Heavy duty type front fender	Yes	
b) Laminated (safety) windshield	Yes	
c) Sun visors supplied	Yes	
d) Rear view mirrors (external both sides and internal) supplied	Yes	
e) Full size spare Tyre with rim and carrier mounted under truck	Yes	
f) Hydraulic (telescopic) jack, wheel brace & manufacturer's standard tools,	Yes,	
g) Any other equipment (or accessories) supplied	Specify	
h) Vehicle to be fitted with electronic speed governor	Yes (Mandatory)	
i) Governor to limit maximum speed to 80km/hr certificate provided.	Yes (Mandatory)	
j) Governor to be tamper proof	Yes (Mandatory)	
k) Governor to be certified by KPLC Engineer before fitting.	Yes (Mandatory)	
l) Engine immobilize system fitted	Yes	
m) Hazard Triangles metallic, Standard First Aid KS-2094-2007 and 1 Kg fire extinguisher.	Yes (Mandatory)	
n) Supply addition Loose Floor rubber mats	Yes	
10. WARRANTY.		
a) Specimen of vehicle warranty to be submitted when tendering	Yes	
b) Each vehicle supplied to carry a statement of warranty	Yes	
c) Vehicle warranty duration min. 12 Months 40,000Km	Specify Months	
d) Whichever occurs first	Specify Kms (mandatory)	
e) Vehicle Free Service on Labour & Parts	Parts (Kms)	
	Labour (Kms)	
11. MANUALS.		
a) All literature in the English language	Yes (mandatory)	
b) Repair manuals, supplied	Yes (mandatory)	
c) Parts catalogue/microfiche/CD, supplied	Yes (mandatory)	
d) Drivers handbook supplied	Yes (mandatory)	
e) Service schedule supplied	Yes (mandatory)	

12. OTHER REQUIREMENTS.		
a) Manufacturer's authorization supplied when tendering.	Yes (mandatory)	
b) Evidence (in form of purchase documents) of minimum 10 units sold and serviced in Kenya.	Yes (mandatory)	
c) Vehicle to be registered by Registrar of Motor Vehicles	Yes (mandatory)	
d) Vehicle to be inspected by the KPLC Engineer prior to delivery.	Yes (mandatory)	
e) Franchise Holders and dealers who own fully fledged workshops with adequate equipment and facilities.	Yes (Mandatory)	
f) Car identity on all Glasses and Lights.	Yes	
g) Body construction and all fitments to conform to Kenya Traffic Act CAP 403.	Yes (Mandatory)	
h) Chevrons and reflectors fitted on rear to conform to Kenya traffic act.	Yes	
i) Indicate name and physical addresses of all Dealers/Agents where Genuine Spares and back-up service can be obtained in at least four (5) major Kenya Power depots (Nairobi, Mombasa, Kisumu, Nyeri, Nakuru and Eldoret).	Attach list Yes (Mandatory)	

6.0 TON (110kN) LIFTING TRUCK MOUNTED CRANE COMPLETE WITH HOOK & AUGUR BIT

QUANTITY: 17

Specifications: No KPLC-09-16-17

Description: 6.0 Ton (110kN) Capacity Lifting truck mounted crane complete with Hook & Augur bit.

Tenderer's name:.....

	KPLC Requirements	Tenderer's Offer
1. GENERAL.		
a) Make	-	
b) Model	-	
c) Country of origin	-	
d) Manufacturer's Authorization for Crane; Supplied	Yes (mandatory)	
e) Manufacturer's Literature & Brochures for Crane: Supplied.	Yes (mandatory)	
f) Technical Specification Sheet fully completed and submitted.	Yes (mandatory)	
g) A standard production, 6.0 ton (110kN) truck mounted knuckle boom lifting crane of latest design in the class, robust construction in current production and marketed in Kenya.	Yes (mandatory)	
h) Supplied new.	Yes (mandatory)	
i) Crane to be fitted on the supplied cab chassis truck	Yes (mandatory)	
2. DIMENSIONS AND WEIGHTS.		
a) Minimum Hydraulic Outreach standard	10.6m (mandatory)	
b) Lifting Capacity, min.	110kNm (mandatory)	
c) Hydraulic boom extension, min.	5.9m	

d) Extension cylinder pulling force	49-58KN	
e) Extension cylinder pushing force	42-51KN	
f) Outreach manual extension	12.8m	
g) Lifting height above installation level. Hydraulic /manual.	13.0/15.2m	
h) Lifting Capacity at 1.8 m	6000 kg	
i) Lifting Capacity at 3.5m	3000kg	
j) Lifting Capacity at 5.2m	2000kg	
k) Outreach-Lifting Capacity, standard at 3.0 m	3,700kg (mandatory)	
l) Outreach-Lifting Capacity, standard at 4.5 m	2,500kg (mandatory)	
m) Outreach-Lifting Capacity, standard at 6.3 m	1,720kg (mandatory)	
n) Outreach-Lifting Capacity , standard at 10.3 m	1,000kg (mandatory)	
o) Rec. oil flow	45-50l/min.	
p) Working pressure, 28.5 MPa	Yes (mandatory)	
q) Oil in tank	50L	
r) Maximum slope viable at full capacity	6° Yes (Mandatory)	
s) Slewing speed	15° m/s	
t) Max. Slope viable at full capacity	6 degrees	
u) Slewing torque, gross	16.4KNm	
v) Slewing angle	415°-430°	
w) Lifting speed at standard hydraulic outreach and rec. oil flow	1.7m/s	
x) Height in folded position	2200mm	
y) Width in folded position	2500mm	
z) Installation space needed	860mm	
aa) Tiltable and extendable stabilizer legs	Yes (mandatory)	

3. WEIGHTS		
a) Loader in standard version without support legs.	1520Kg	
b) Frame attachments	32-65Kg	
c) Support leg equipment.	195-366kg	
d) Power Take off.	Yes (mandatory)	
e) High performance pump	270Bars Yes (mandatory)	
f) Anchoring Bolts	Yes	
g) High Pressure hoses	Yes (mandatory)	
h) Crane performance - Both sides	Yes	
i) Identical lever sequence	Yes	
j) Crane will include Load Bearing valve	Yes	
k) Crane will include Load Failure Valves.	Yes	
l) After Sales service	Yes	
m) Test Certificate for crane supplied	Yes (mandatory)	
n) One year minimum warranty	Yes (mandatory)	
4. HIGH VOLTAGE ALERT SYSTEM		
a) High Volt Alert system fitted.	Yes (mandatory)	
b) PTO engaging high voltage alert system	Yes (mandatory)	
c) Nominal operating temperature within range -5° to +55°	Yes (mandatory)	
d) Sound warning tone, max.	85db Yes (mandatory)	
e) Visual warning	Yes (mandatory)	
f) Detection range-50m	Yes	
g) Hook capacity, min.	7,000Kg Yes (mandatory)	

5. HYDRAULIC POLE TAMPER.		
a) Hydraulic powered pole tamper attach details and literature.	Yes (mandatory)	
b) Capacity: 75mm x 200mm kidney shoe	Yes (mandatory)	
c) 9000mm high pressure hydraulic hose complete with quick couplings	Yes (mandatory)	
d) Performance, 1600blows per minute, min.	Yes (mandatory)	
e) Pressure 70-140Bars	Yes	
f) Flow range: 11-34 litres per minute	Yes	
g) Weight, max.	14 Kgs Yes (mandatory)	
h) Control valve on tamper handle for on/off operation	Yes (mandatory)	
i) Stroke, min.	60mm Yes (mandatory)	
j) Length of pole Tamper	1.7m-1.9m Yes mandatory)	
6. AUGUR BIT.		
a) Heavy duty planetary drive	Yes	
b) Bi-directional	Yes	
c) Complete with extensions and Augur bits	Yes (Mandatory)	
d) Depth of drilling, min.	2000mm (Mandatory)	
e) Quick change facility	400mm (Mandatory)	
f) Catalogue	Yes (Mandatory)	
7. EQUIPMENT AND OTHER ACCESSORIES.		
a) Hour meter and its accessories fitted.	Yes (mandatory)	
b) Maintenance & service manual.	Yes (mandatory)	
c) Operational manual.	Yes (mandatory)	

d) Spare parts catalogue.	Yes (mandatory)	
e) Augur and its accessories supplied	Yes (Mandatory)	
f) Hook capacity	7000Kg Yes (Mandatory)	
8. WARRANTY & FREE SERVICE.		
a) Specimen of crane warranty to be submitted when tendering.	Yes	
b) Each crane supplied to carry a statement of warranty.	Yes (mandatory)	
c) Truck mounted crane warranty duration min. 12 Months	Specify Months	
200 Hours whichever occurs first	Specify Kms Yes (mandatory)	
d) Crane Free Service on Labour& Parts	Parts (Kms)	
	Labour (Kms)	
9. MANUALS.		
a) All literature in the English language	Yes (mandatory)	
b) Repair manuals, supplied	Yes (mandatory)	
c) Parts catalogue/microfiche/CD, supplied	Yes (mandatory)	
d) Operator's handbook supplied	Yes	
e) Service schedule supplied	Yes	
f) Training included	Yes (mandatory)	
g) Crane test certificate provided	Yes (mandatory)	
10. OTHER REQUIREMENTS.		
a) Manufacturers' authorization supplied when tendering.	Yes (mandatory)	

b) Evidence (in form of purchase documents) of minimum 10 units sold and serviced in Kenya.	Yes (Mandatory)	
c) Franchise Holders and dealers who own fully fledged workshop(s) equipment with adequate facilities.	Yes (Mandatory)	
d) Body construction and all fitments to conform to Kenya traffic act and to have a certificate from vehicle inspection centre.	Yes (mandatory)	
e) Crane to be inspected by the KPLC Engineer prior to delivery.	Yes (mandatory)	
f) Crane to be fitted onto the supplied cab chassis truck.	Yes (mandatory)	
g) Indicate name and physical addresses of all Dealers/Agents where Genuine Spares and back-up service can be obtained in at least one major Kenya Power depots (Nairobi, Mombasa, Kisumu, Nyeri, Nakuru and Eldoret).	Attach list – Yes (mandatory)	

HEAVY TRUCK, 6X4, 26.0 Ton, FULLY ENCLOSED BODY.

Quantity: 1

Specification: NO. KPLC-TPT-10-16-17

Description: Heavy Truck , 6X4, 26.0 Ton Payload Cab chassis, fully enclosed body

Tenderers' name.....

1. GENERAL	KPLC Requirements	Tenderer's offer
a) Make	-	
b) Model	-	
c) Country of origin	-	
d) Manufacturer's Authorization supplied	Yes (mandatory)	
e) Manufacturer's Literature & Brochures supplied	Yes (mandatory)	
f) Technical Specification Sheet fully completed and submitted.	Yes (mandatory)	
g) A standard production 6x4, 26 ton payload truck, fully enclosed body of latest design in robust construction in current production and marketed in Kenya.	Yes, (mandatory)	
h) Supplied new	Yes (mandatory)	
i) Designed to heavy duty export specs, capable of operating in tropical conditions over paved and unpaved roads	Yes (mandatory)	
j) Control Forward/Normal	Specify	
k) Most suitable for operating on both "on and off" road conditions.	Yes (mandatory)	
l) Most suitable for personnel and loose cargo transportation.	Yes (mandatory)	

2. DIMENSIONS AND WEIGHTS.		
a) Overall length, min.	9,400 mm Yes (mandatory)	
b) Overall width approx.	2,400 mm	
c) Overall height min.	2,600 mm	
d) Wheel base min.	5,700 mm Yes (mandatory)	
e) Length of chassis after Cab, min.	7,500 mm Yes (mandatory)	
f) Kerb weight min.	6,900 Kg Yes (mandatory)	
g) Max. G.V.W. Approx.	22,000 Kg	
h) Gross Payload, within range	15,000 – 17,500 Kg Yes (Mandatory)	
i) Net Payload. Within range	9,500-10,500 Kg Yes (mandatory)	
j) Permissible front (steering) axle load, max	6,000kg (mandatory)	
k) Permissible rear (for dual wheels) axle load, max	10,000kg (mandatory)	
l) Ground clearance, min	260 mm (mandatory)	
3. ENGINE.		
a) Make	-	
b) Model	-	
c) Country of origin	-	
d) Engine performance curves supplied	Yes	

e) Diesel Engine, water cooled, 4 stroke	Yes, (mandatory)	
f) Mode of aspiration. (Natural/Turbo)	Specify	
g) Piston displacement, min.	7545cc Yes(mandatory))	
h) Number of cylinders, min.	6 No. mandatory)	
i) Maximum power output /rpm, min	220HP/2500rpm Yes (mandatory)	
j) Maximum torque developed/rpm), min	700Nm/1300rpm Yes (mandatory)	
k) Air cleaner type, disposable/oil bath	Specify	
4. CLUTCH AND TRANSMISSION.		
a) Clutch, dry single plate,	Yes	
b) Clutch system actuation, Hydraulic	Yes	
c) Gearbox, synchromesh	Yes	
d) Number of speeds, min.	8F, R(mandatory)	
e) Drive configuration	6x4 Yes (mandatory)	
5. BRAKES AND TYRES.		
a) Brakes, hydraulic-pneumatic assisted	Yes (mandatory)	
b) Mechanical parking brake, to act on transmission	Yes	
c) Rear tyres	Dual	
d) Tyres size locally manufactured	Yes	
e) Optimum tyre size	Specify	

f) Suspension, front and rear heavy duty leaf springs with telescopic shock absorbers at front	Yes	
6. STEERING, CONTROL AND CAB.		
a) Right Hand Drive steering	Yes (Mandatory)	
b) Steering type - Power steering assisted	Yes (Mandatory)	
c) Seat belts conforming to the KEBS standard No. KS 06-664 of 1985	Yes (Mandatory)	
7. BODY CONSTRUCION.		
a) Fully enclosed body with 1 No. cabin single side's door at the front left hand side and double tail gates for easy accessibility.	Yes (mandatory)	
b) Body secured to chassis by U-bolts, diameter 16mm, held in position on wooden V-blocks.	Yes (mandatory)	
c) Body floor fabricated from 4.0mm thick mild steel plate (full width) reinforced at equal distances with box/channel sections.	Yes (mandatory)	
d) Body cross bearers of pre-stressed channel sections, 100 x 50 x 4.5mm equidistantly spaced at a maximum of 500mm apart	Yes	
e) Reinforced floor for heavier loads headboard of body	Yes (mandatory)	
f) Suitable size toolbox to be fitted under body on the right hand side.	Yes	
g) Fixed cargo carrier clear of cab to create suitable space for fitting crane machine.	Yes, (mandatory)	
h) Suitable rear mudguards fitted.	Yes, (mandatory)	
i) Stone guards fitted for taillights.	Yes	
j) Suitable size ladder fitted for the body cargo carrier.	Yes , (mandatory)	

k) Chevrons and reflectors fitted on rear to conform to Kenya traffic act.	Yes	
l) All body steelwork to be thoroughly cleaned before painting. Both internal and exterior finish to be proceeded by one coat (red oxide) and undercoat to prevent corrosion.	Yes	
m) Truck to be painted in KPLC paints as specified by the user.	Yes (Mandatory)	
n) Body construction and all fitments to conform Cap 403 Kenya Traffic Act.	Yes (Mandatory)	
o) Properly safeguard and expose number plate	Yes (Mandatory)	
8. ELECTRICAL SYSTEM/INSTRUMENTS.		
a) System voltage, negative earth	24V Yes	
b) Battery capacity and size	Specify	
c) Full lighting to conform to Cap 403, subs 23-Kenya Traffic Act.	Yes	
d) Standard instruments and gauges (or warning lights) for charging circuit, oil pressure, coolant temperature etc.	Yes	
9. EQUIPMENT.		
a) Full size spare Tyre with rim and carrier mounted under truck	Yes	
b) Hydraulic (telescopic) jack, wheel brace & manufacturer's standard tools.	Yes	
c) Vehicle to be fitted with electronic speed governor	Yes (Mandatory)	
d) Governor to limit maximum speed to 80km/hr certificate provided.	Yes (Mandatory)	
e) Governor to be tamper proof	Yes (Mandatory)	
f) Governor to be certified by Senior Transport Engineer before	Yes (Mandatory)	

fitting.		
g) Engine immobilize system fitted	Yes	
h) Hazard Triangles metallic, Standard First Aid KS-2094-2007 and 2 Kg fire extinguisher.	Yes (Mandatory)	
10. WARRANTY.		
a) Specimen of vehicle warranty to be submitted when tendering	Yes	
b) Each vehicle supplied to carry a statement of warranty	Yes	
c) Vehicle warranty duration min. 12 Months 40,000Km	Specify Months	
d) Whichever occurs first	Specify Kms (mandatory)	
e) Vehicle Free Service on Labour& Parts	Parts (Kms)	
	Labour (Kms)	
11. MANUALS.		
a) All literature in the English language	Yes (mandatory)	
b) Repair manuals, supplied	Yes (mandatory)	
c) Parts catalogue/microfiche/CD, supplied	Yes (mandatory)	
d) Drivers handbook supplied	Yes	
e) Service schedule supplied	Yes	
12. OTHER REQUIREMENTS.		
a) Vehicle to be registered by Kenya Registrar of Motor Vehicles	Yes (mandatory)	
b) Vehicle to be inspected by the Senior Transport Engineer prior to delivery	Yes (mandatory)	

c) Franchise Holders and dealers who own fully fledged workshop(s) equipment with adequate facilities for servicing the equipment. Attach proof of ownership/lease and list of equipment installed	Yes (mandatory)	
d) Car identity on all Glasses and Lights	Yes, (mandatory)	
e) Body construction and all fitments to conform to CAP 403-Kenya Traffic Act.	Yes (Mandatory)	
f) Chevrons and reflectors fitted on rear to conform to Kenya traffic act.	Yes	
g) Indicate name and physical addresses of all Dealers/Agents where Genuine Spares and back-up service can be obtained In At least four major KPLC depots (Nairobi, Mombasa, Kisumu, Nyeri, Nakuru and Eldoret).	Attach list (mandatory)	

HEAVY TRUCK, 6X4, 26.0 Ton payload, MEDIUM SIDED BODY.

Quantity: 1

Specification: No. KPLC-TPT-11-16-17

Description: Heavy Truck , 6X4, 26.0 Ton Payload Cab chassis, medium sided body

Tenderers' name.....

2. GENERAL	KPLC Requirements	Tenderer's offer
a) Make	-	
b) Model	-	
c) Country of origin	-	
d) Manufacturer's Authorization supplied	Yes (mandatory)	
e) Manufacturer's Literature & Brochures supplied	Yes (mandatory)	
f) Technical Specification Sheet fully completed and submitted.	Yes (mandatory)	
g) A standard production 6x4, 26.0 ton payload truck, low sided body of latest design in robust construction in current production and marketed in Kenya.	Yes, (mandatory)	
h) Supplied new	Yes (mandatory)	
i) Designed to heavy duty export specs, capable of operating in tropical conditions over paved and unpaved roads	Yes (mandatory)	
j) Control Forward/Normal	Specify	
k) Most suitable for operating on both "on and off" road conditions.	Yes (mandatory)	

l) Most suitable for personnel and containerized cargo transportation.	Yes (mandatory)	
2. DIMENSIONS AND WEIGHTS.		
a) Overall length, min.	9,400 mm Yes (mandatory)	
b) Overall width approx.	2,400 mm	
c) Overall height min.	2,600 mm	
d) Wheel base min.	5,700 mm Yes (mandatory)	
e) Length of chassis after Cab, min.	7,500 mm Yes (mandatory)	
f) Kerb weight min.	6,900 Kg Yes (mandatory)	
g) Max. G.V.W. Approx.	22,000 Kg	
h) Gross Payload, within range	15,000 – 16,000 Kg Yes (Mandatory)	
i) Net Payload. Within range	9,500-10,500 Kg Yes (mandatory)	
j) Permissible front (steering) axle load, max	6,000kg (mandatory)	
k) Permissible rear (for dual wheels) axle load, max	10,000kg (mandatory)	
l) Ground clearance, min	260 mm (mandatory)	
3. ENGINE.		
a) Make	-	
b) Model	-	
c) Country of origin	-	
d) Engine performance curves supplied	Yes	
e) Diesel Engine, water cooled, 4 stroke	Yes, (mandatory)	

f) Mode of aspiration. (Natural/Turbo)	Specify	
g) Piston displacement, within range	7545 – 9850cc Yes(mandatory))	
h) Number of cylinders, min.	6 No. mandatory)	
i) Maximum power output /rpm, min	220HP/2500rpm Yes (mandatory)	
j) Maximum torque developed/rpm), min	700Nm/1300rpm Yes (mandatory)	
k) Air cleaner type, disposable/oil bath	Specify	
4. CLUTCH AND TRANSMISSION.		
a) Clutch, dry single plate,	Yes	
b) Clutch system actuation, Hydraulic	Yes	
c) Gearbox, synchromesh	Yes	
d) Number of speeds, min.	8F, R(mandatory)	
e) Drive configuration	6x4 Yes (mandatory)	
5. BRAKES AND TYRES.		
a) Brakes, hydraulic-pneumatic assisted	Yes (mandatory)	
b) Mechanical parking brake, to act on transmission	Yes	
c) Rear tyres	Dual	
d) Tyres size locally manufactured	Yes	
e) Optimum tyre size	Specify	
f) Suspension, front and rear heavy duty leaf springs with telescopic shock absorbers at front	Yes	

6. STEERING, CONTROL AND CAB.		
a) Right Hand Drive steering	Yes (Mandatory)	
b) Steering type - Power steering assisted	Yes (Mandatory)	
c) Seat belts conforming to the KEBS standard No. KS 06-664 of 1985	Yes (Mandatory)	
7. BODY CONSTRUCION.		
a) Medium drop side body with 5 No. drop sides' doors, height of drop side 800mm.	Yes (mandatory)	
b) Body secured to chassis by U-bolts, diameter 16mm, held in position on wooden V-blocks.	Yes (mandatory)	
c) Body floor fabricated from 4.0mm thick mild steel plate (full width) reinforced at equal distances with box/channel sections.	Yes (mandatory)	
d) Body cross bearers of pre-stressed channel sections, 100x50x4.5mm equidistantly spaced at a maximum of 500mm apart	Yes	
e) Reinforced floor for heavier loads headboard of body	Yes (mandatory)	
f) Suitable size toolbox to be fitted under body on the right hand side.	Yes	
g) Suitable rear mudguards fitted.	Yes, (mandatory)	
h) Stone guards fitted for taillights.	Yes	
i) Suitable size ladder fitted for the body cargo carrier.	Yes , (mandatory)	
j) Chevrons and reflectors fitted on rear to conform to Kenya traffic act.	Yes	
k) All body steelwork to be thoroughly cleaned before painting. Both internal and exterior finish	Yes	

to be proceeded by one coat (red oxide) and undercoat to prevent corrosion.		
l) Truck to be painted in KPLC paints as specified by the user.	Yes (Mandatory)	
m) Body construction and all fitments to conform Cap 403 Kenya Traffic Act.	Yes (Mandatory)	
n) Properly safeguard and expose number plate	Yes (Mandatory)	
8. ELECTRICAL SYSTEM/INSTRUMENTS.		
a) System voltage, negative earth	24V Yes	
b) Battery capacity and size	Specify	
c) Full lighting to conform to Cap 403, subs 23- Kenya Traffic Act	Yes	
d) Standard instruments and gauges (or warning lights) for charging circuit, oil pressure, coolant temperature etc.	Yes	
9. EQUIPMENT.		
a) Full size spare Tyre with rim and carrier mounted under truck	Yes	
b) Hydraulic (telescopic) jack, wheel brace & manufacturer's standard tools.	Yes	
c) Vehicle to be fitted with electronic speed governor	Yes (Mandatory)	
d) Governor to limit maximum speed to 80km/hr certificate provided.	Yes (Mandatory)	
e) Governor to be tamper proof	Yes (Mandatory)	
f) Governor to be certified by Senior Transport	Yes (Mandatory)	

Engineer before fitting.		
g) Engine immobilize system fitted	Yes	
h) Hazard Triangles metallic, Standard First Aid KS-2094-2007 and 2 Kg fire extinguisher.	Yes (Mandatory)	
10. WARRANTY.		
a) Specimen of vehicle warranty to be submitted when tendering	Yes	
b) Each vehicle supplied to carry a statement of warranty	Yes	
c) Vehicle warranty duration min. 12 Months 40,000Km	Specify Months	
d) Whichever occurs first	Specify Kms (mandatory)	
e) Vehicle Free Service on Labour& Parts	Parts (Kms)	
	Labour (Kms)	
11. MANUALS.		
a) All literature in the English language	Yes (mandatory)	
b) Repair manuals, supplied	Yes (mandatory)	
c) Parts catalogue/microfiche/CD, supplied	Yes (mandatory)	
d) Drivers handbook supplied	Yes	
e) Service schedule supplied	Yes	
12. OTHER REQUIREMENTS.		
a) Vehicle to be registered by Kenya Registrar of Motor Vehicles	Yes (mandatory)	

b) Vehicle to be inspected by the Senior Transport Engineer prior to delivery	Yes (mandatory)	
c) Franchise Holders and dealers who own fully fledged workshop(s) equipment with adequate facilities for servicing the equipment. Attach proof of ownership/lease and list of equipment installed	Yes (mandatory)	
d) Car identity on all Glasses and Lights	Yes, (mandatory)	
e) Body construction and all fitments to conform to CAP 403-Kenya Traffic Act.	Yes (Mandatory)	
f) Chevrons and reflectors fitted on rear to conform to Kenya traffic act.	Yes	
g) Indicate name and physical addresses of all Dealers/Agents where Genuine Spares and back-up service can be obtained In At least four major KPLC depots (Nairobi, Mombasa, Kisumu, Nyeri, Nakuru and Eldoret).	Attach list (mandatory)	

DOUBLE CABIN, 4X4, LWB, 2200 - 2500cc, DIESEL**Quantity: 32****Specification NO. KPLC-TPT-12-16-17****Description: Double cabin, 4x4, LWB, 2200 - 2500cc, Diesel****TENDERERS'S NAME.....**

	KPLC Requirements	Tenderer's Offer
1. GENERAL.		
a) Make	-	
b) Model	-	
c) Country of origin	-	
d) Manufacturer's Authorization Supplied	Yes (mandatory)	
e) Manufacturer's Literature & Brochures Supplied.	Yes (mandatory)	
f) Technical Specification Sheet fully completed and submitted.	Yes (mandatory)	
g) A standard production double cabin, 4x4, diesel utility vehicle of latest design in the class, robust construction in current production and marketed in Kenya.	Yes (mandatory)	
h) Supplied new.	Yes (mandatory)	
i) Designed to export specifications, capable of operating in tropical conditions.	Yes (mandatory)	
j) Most suitable for operating both "on and off" road conditions.	Yes (mandatory)	
k) Most suitable for personnel and loose cargo transportation.	Yes (mandatory)	
2. DIMENSIONS AND WEIGHTS.		
a) Overall length, min.	5,000 mm Yes (mandatory)	
b) Overall width, min.	1,750 mm (Mandatory)	
c) Overall height, approx.	1,780 mm	
d) Wheelbase, min.	3000mm Yes (mandatory)	
e) Ground Clearance, min.	230 mm Yes (mandatory)	
f) Max. G.V.W. approx.	2,740 Kg Yes (Mandatory)	
g) Kerb weight, min.	1,800 Kg	

h) Payload, min.	940 Kgs Yes (mandatory)	
i) Turning radius, approx.	6,500 mm	
3. ENGINE.		
a) Make	-	
b) Model	-	
c) Country of origin	-	
d) Engine performance curves supplied	Yes	
e) Engine type, diesel, 4 stroke, water cooled	Yes,	
f) Piston displacement, within range.	2,200-2,500cc. Yes (mandatory)	
g) Engine aspiration, turbocharged.	Yes (mandatory)	
h) Number of cylinders min.	4 No.	
i) Maximum power output/rpm, min.	75 kw/3600rpm Yes, (mandatory)	
j) Maximum torque developed/rpm, min.	180Nm/2400rpm Yes, (mandatory)	
k) Engine aspiration, turbocharged	Yes, (mandatory)	
l) Fuel system, Direct Injection	Yes (mandatory)	
m) Air filter, disposable/oil bath	Specify	
n) Oil and fuel filter type	Disposable	
o) Average fuel consumption (on full load)	Specify Kms/lit	
p) Fuel tank capacity, min.	75 Litres Yes (mandatory)	
4. CLUTCH AND TRANSMISSION.		
a) Clutch, dry single plate, diaphragm type.	Specify	
b) Hydraulic, clutch actuation.	Yes	
c) Manual synchromesh gearbox.	Yes,(mandatory)	
d) Total Speeds, min.	5F/1R, Yes	
5. BRAKES AND TYRES.		
a) Assisted hydraulic, dual brake system	Yes	
b) Drum or disc brake	Specify front	
	Specify rear	
c) Mechanical parking brake, to act on transmission or rear wheels	Yes Specify	
d) Locally manufactured dual purpose tyres	Yes	
e) Optimum tyre size	Specify	
f) Tubed or Tubeless	Specify	

6. SUSPENSION AND STEERING.		
a) Front and rear suspension, independent with telescopic dampers	Specify Front	
	Rear	
b) Power assisted steering	Yes, (Mandatory)	
c) Right hand drive steering	Yes	
7. CREW CAB.		
a) Roomy cab to seat 5 adults comfortably including driver, driver's seat adjustable.	Yes(mandatory)	
b) Front row adjustable seats for two with safety (seat belts provided.	Yes(mandatory)	
c) Second row to seat 3 adults comfortably c/w seat belts	Yes	
d) Seats to have safety belts conforming to KEBS 06-664: 1985 standard.	Yes (mandatory)	
e) Robust cabin body with secure side hinged tailgate and a suitable rear window.	Yes	
f) Tools Cabin steel body as per the given drawing.	Yes (mandatory)	
g) Suitable size toolbox to be fitted in the rear cabin.	Yes	
h) Suitably, fixed ladder carrier on top rear cabin.	Yes	
8. BODY AND FINISH.		
a) All exterior body panels made non- corrosive, and all external steel fitting to be galvanized or painted.	Yes	
b) Body finish, high gloss Kenya Power colours as specified by the user.	Yes(mandatory)	
c) Anti-rust compound applied to underbody for sea side operation.	Yes	
9. ELECTRICAL SYSTEM/INSTRUMENTS.		
a) System voltage, negative earth, with alternator charging.	12V, Yes	
b) Battery capacity	Specify	
c) Full lighting to conform to Cap 403, subs 23-Kenya Traffic Act	Yes	
d) Standard instruments and gauges (or warning lights) for charging circuit, oil pressure, coolant temperature etc.	Yes	
10. EQUIPMENT.		
a) Sun visors supplied 2 No.	Yes	
b) Rear view mirrors supplied 2 no. External, 1 No. Internal	Yes	
c) FM, MW, SW radio cassette fitted	Yes	

d) Spare wheel & external carrier supplied	Yes	
e) Manufacturer's standard tools, supplied	Specify	
f) High raise jack with jacking points and wheel brace supplied	Yes	
g) Beacon light & Overhead Adjustable spotlight.	Yes	
h) Vehicle to be fitted with electronic speed governor	Yes (mandatory)	
i) Governor to limit maximum speed to 80km/hr and provide certificate.	Yes (mandatory)	
j) Governor to be tamper proof	Yes	
k) Governor to be certified by Senior Transport Engineer before fitting	Yes (mandatory)	
l) Anti-theft alarm system fitted	Yes	
m) Metallic Hazard Triangles 2No, standard First Aid KS-2094-2007 and 1 Kgs fire extinguisher.	Yes	
n) Supply addition Loose Floor rubber mats	Yes	
11. WARRANTY & FREE SERVICE.		
a) Specimen of vehicle warranty to be submitted when tendering	Yes	
b) Each vehicle supplied should carry a Statement of warranty	Yes Yes (mandatory)	
c) Vehicle warranty min., 12 Months or 40,000Km whichever comes first	Specify months Specify Kms (mandatory)	
d) Vehicle Free Service on Labour& Parts	Parts (Kms) Labour (Kms)	
12. MANUALS.		
a) All literature in English language	Yes (mandatory)	
b) Repair manuals, supplied	Yes (mandatory)	
c) Parts catalogue/microfiche/CD, supplied.	Yes (mandatory)	
d) Drivers handbook supplied	Yes	
e) Service schedule supplied	Yes	
13. OTHER REQUIREMENTS.		
a) Manufacturers' authorization supplied when tendering.	Yes (mandatory)	
b) Evidence (in form of purchase documents) of minimum 10 units sold and serviced in Kenya.	Yes (mandatory)	
c) Vehicle to be registered by Registrar of Motor Vehicles	Yes (mandatory)	
d) Vehicle to be inspected by the Senior Transport Engineer prior to delivery.	Yes (mandatory)	

e) Franchise Holders and dealers who own fully fledged workshops with adequate equipment and facilities.	Yes (Mandatory)	
f) Body construction and all fitments to conform to Kenya Traffic Act CAP 403.	Yes (Mandatory)	
g) Chevrons and reflectors fitted on rear to conform to Kenya traffics act.	Yes	
h) Car identity on all Glasses and Lights	Yes	
i) Indicate name and physical addresses of all Dealers / Agents where Genuine Spares and back-up service can be obtained in at least five (5) major Kenya Power depots (Nairobi, Mombasa, Kisumu, Nyeri, Nakuru and Eldoret).	Attach list – Yes (mandatory)	

SINGLE CABIN, 4X4, DIESEL, 3800-4200cc.

QUANTITY: 3

Specification No.KPLC-TPT-13-16-17

Description: Single cab, open pick-up body.

Tenderers' name.....

	KPLC Requirements	Tenderer's Offer
1. GENERAL.		
a) Make	-	
b) Model	-	
c) Country of origin	-	
d) Manufacturer's Authorization Supplied	Yes (mandatory)	
e) Manufacturer's Literature & Brochures Supplied.	Yes (mandatory)	
f) Technical Specification Sheet fully completed and submitted.	Yes (mandatory)	
g) A standard production single cab, 4x4, diesel utility vehicle, open cargo carrier of latest design in the class, robust construction in current production and marketed in Kenya.	Yes (mandatory)	
h) Supplied new.	Yes (mandatory)	
i) Designed for light duty specifications, capable of operating in tropical conditions of mud and dust.	Yes (mandatory)	
j) Most suitable for operating both "on and off" road conditions.	Yes (mandatory)	
k) Most suitable for personnel and cargo transportation.	Yes (mandatory)	
2. DIMENSIONS AND WEIGHTS.		
a) Overall length min.	5080mm Yes (mandatory)	

b) Overall width, min.	1700mm Yes (mandatory)	
c) Overall height approx.	2000mm	
d) Wheelbase min.	3000mm Yes (mandatory)	
e) Max. G.V.W. approx.	3200kg	
f) Kerb weight. Max.	2500kg	
g) Ground clearance, min.	230mm Yes (mandatory)	
h) Minimum turning radius, approx.	7.0m	
3. ENGINE.		
a) Make	-	
b) Model	-	
c) Country of origin	-	
d) Engine performance curves supplied	Yes	
e) Engine type, diesel, 4 stroke, water cooled	Yes (mandatory)	
f) Piston displacement, within the range.	3800-4200cc (Mandatory)	
g) Number of cylinders, min.	6	
h) Maximum power output (Kw/rpm), approx.	95kw/3600rpm Yes (mandatory)	
i) Maximum torque developed (Nm/rpm), approx.	280Nm/2100rpm Yes (mandatory)	
j) Engine aspiration, natural/turbocharger	Specify	
k) Air filter, disposable/oil bath	Specify	
l) Average fuel consumption (on full load)	Specify Kms/lit	
m) Fuel tank capacity, min.	90 Liters	

4. CLUTCH AND TRANSMISSION.		
a) Clutch, dry single plate, diaphragm type	Specify	
b) Hydraulic, clutch actuation	Yes	
c) Manual synchromesh gearbox	Yes	
d) Min. 5-Speed manual/1Reverse	Yes (Mandatory)	
5. ELECTRIC WINCH AND FRONT BUMPER BAR.		
a) Air bag compatible bull bar with T jacking slots.	Yes (Mandatory)	
b) A bull bar with a recessed winch compatible fitment	Yes (Mandatory)	
c) Electric 12,000LBS winch fitted in front with the operating control box mounted inside the engine room with an extension on the mudguard to connect the remote control.	Yes (Mandatory)	
d) High lift jack, properly secured inside the rear cabin.	Yes (Mandatory)	
6. BRAKES AND TYRES.		
a) Assisted hydraulic, dual brake system	Yes	
b) Drum or disc brake	Specify front	
	Specify rear	
c) Mechanical parking brake, to act on transmission or rear wheels	Yes Specify	
d) Locally manufactured dual purpose tyres	Yes	
e) Optimum tyre size	Specify	
f) Tubed or Tubeless	Specify	
7. SUSPENSION AND STEERING.		
a) Front and rear suspension, independent with coil-spring and telescopic dampers	Specify Front:	
	Rear:	

a) Power assisted steering system.	Yes (mandatory)	
b) Right hand drive steering	Yes (mandatory)	
8. PICK-UP BODY.		
c) Suitable cargo box for carrying loose cargo	Yes	
d) Suitable Cargo box fitted with Ø750mm (3") diameter anti roll bars.	Yes (mandatory)	
e) Cargo box floor to be reinforced with the Chequered plate material 4.0mm thick.	Yes (mandatory)	
f) Suitable bolted toolbox.	Yes	
g) Suitable rear Light grills and spare wheel carrier fitted.	Yes	
9. BODY AND FINISH.		
a) All exterior body panels made non- corrosive, and all external steel fitting to be galvanized or painted	Yes	
b) Anti-rust compound applied to under body for seaside operation.	Yes	
c) Body finish, high gloss current Kenya power colours as specified by the user.	Yes (mandatory)	
d) A suitable bull bar with a recessed Electric winch compatible fitment.	Yes (Mandatory)	
10. ELECTRICAL SYSTEM AND INSTRUMENTS.		
a) System voltage, negative earth, with alternator charging	12V, Yes, Yes	
b) Battery capacity	1x12V, 70Ah	
c) Full lighting to conform to Cap 403, subs 23-Kenya Traffic Act	Yes	
d) Standard instruments and gauges (or warning lights) for charging circuit, oil pressure, coolant temperature etc.	Yes	

11. EQUIPMENT.		
a) Sun visors supplied 2 No.	Yes	
b) Rear view mirrors supplied 2 No. External, 1 No. Internal	Yes	
c) FM, MW, SW radio cassette fitted.	Yes	
d) Spare wheel and external carrier supplied.	Yes	
e) Manufacturer's standard tools, supplied.	Specify	
f) Hydraulic (telescopic) jack, wheel brace & manufacturer's standard tools	Yes	
g) Vehicle to be fitted with electronic speed governor.	Yes (mandatory)	
h) Governor to limit maximum speed to 80km/hr.	Yes (mandatory)	
i) Governor to be tamper proof.	Yes (mandatory)	
j) Governor to be certified by Senior Transport Engineer before fitting.	Yes (mandatory)	
k) Anti-theft alarm fitted.	Yes (mandatory)	
l) Metallic Hazard Triangles, standard First Aid KS-2094-2007 and 1Kg fire extinguisher.	Yes (mandatory)	
m) Supply addition Loose Floor rubber mats	Yes	
12. WARRANTY & FREE SERVICE.		
a) Specimen of vehicle warranty to be submitted when tendering	Yes	
b) Each vehicle supplied should carry a	Yes	
c) statement of warranty	Yes (mandatory)	
Vehicle warranty min., 12 Months or	Specify months	
40,000Kmwhichever comes first	Specify Kms (mandatory)	
d) Vehicle Free Service on Labour & Parts	Parts (Kms)	
	Labour (Kms)	

13. MANUALS.		
a) All literature in the English language	Yes (mandatory)	
b) Repair manuals, supplied	Yes (mandatory)	
c) Parts catalogue/microfiche/CD, supplied	Yes (mandatory)	
d) Drivers handbook supplied	Yes	
e) Service schedule supplied	Yes	
14. OTHER REQUIREMENTS.		
a) Manufacturers' authorization supplied when tendering.	Yes (mandatory)	
b) Evidence (in form of purchase documents) of minimum 10 units sold and serviced in Kenya.	Yes (mandatory)	
c) Vehicle to be registered by Registrar of Motor Vehicles	Yes (mandatory)	
d) Vehicle to be inspected by the KPLC Engineer prior to delivery	Yes (mandatory)	
e) Franchise Holders and dealers who own fully fledged workshops with adequate equipment and facilities.	Yes (Mandatory)	
f) Body construction and all fitments to conform to Kenya Traffic Act CAP 403.	Yes (Mandatory)	
g) Chevrons and reflectors fitted on rear to conform to Kenya traffics act.	Yes	
h) Car identity on all Glasses and Lights	Yes	
i) Indicate name and physical addresses of all Dealers / Agents where Genuine Spares and back-up service can be obtained in at least five (5) major Kenya Power depots (Nairobi, Mombasa, Kisumu, Nyeri, Nakuru and Eldoret).	Attach list – Yes (mandatory)	

DOUBLE CAB PICK-UP, 4X4, DIESEL, 3800-4200cc.

QUANTITY: 24

Specification No. KPLC-TPT-14-16-17

Description: Double cab pick-up body constructed complete with tools cabin

Tenderers' name.....

	KPLC Requirements	Tenderer's Offer
1. GENERAL.		
a) Make	-	
b) Model	-	
c) Country of origin	-	
d) Manufacturer's Authorization Supplied	Yes (mandatory)	
e) Manufacturer's Literature & Brochures Supplied.	Yes (mandatory)	
f) Technical Specification Sheet fully completed and submitted.	Yes (mandatory)	
g) A standard production Double cabin pick-up body, 4x4, diesel utility vehicle of latest design in the class, robust construction in current production and marketed in Kenya.	Yes (mandatory)	
h) Supplied new.	Yes (mandatory)	
i) Designed for light duty specifications, capable of operating in tropical conditions of mud and dust.	Yes (mandatory)	
j) Most suitable for operating on both "on and off" road conditions.	Yes (mandatory)	
k) Most suitable for personnel and cargo transportation.	Yes (mandatory)	
2. DIMENSIONS AND WEIGHTS.		
a) Overall length min.	5080mm Yes (mandatory)	
b) Overall width, min.	1700mm Yes (mandatory)	

c) Overall height approx.	2000mm	
d) Wheelbase min.	3000mm Yes (mandatory)	
e) Max. G.V.W. approx.	3200kg	
f) Kerb weight, max.	2500kg	
g) Ground clearance, min.	230mm Yes (mandatory)	
h) Minimum turning radius.	7.0m	
3. ENGINE.		
a) Make	-	
b) Model	-	
c) Country of origin	-	
d) Engine performance curves supplied	Yes	
e) Engine type, diesel, 4 stroke, water cooled	Yes (mandatory)	
f) Piston displacement, within the range.	3800-4200cc (Mandatory)	
g) Number of cylinders, min.	6	
h) Maximum power output (hp/rpm)approx. min.	95kw/3600rpm (mandatory)	Yes
i) Maximum torque developed (Nm/rpm), approx. min.	280Nm/2100rpm Yes (mandatory)	
j) Engine aspiration, natural/turbocharger	Specify	
k) Air filter, disposable/oil bath	Specify	
l) Average fuel consumption (on full load)	Specify Kms/lit	
m) Fuel tank capacity, min. approx.	120 Liters	

4. CLUTCH AND TRANSMISSION.		
a) Clutch, dry single plate, diaphragm type	Specify	
b) Hydraulic, clutch actuation	Yes	
c) Manual synchromesh gearbox	Yes	
d) Min. 5-Speed manual/1Reverse	Yes (Mandatory)	
5. ELECTRIC WINCH AND FRONT BULL BAR.		
a) Air bag compatible bull bar with T jacking slots.	Yes (Mandatory)	
b) A bull bar with a recessed winch compatible fitment.	Yes (Mandatory)	
c) Electric winch capacity 12000LBS fitted in front with the operating control box mounted inside the engine room with an extension on the mudguard to connect the remote control.	Yes (Mandatory)	
d) High lift jack suitably secured at the rear cargo box.	Yes (Mandatory)	
6. BRAKES AND TYRES.		
a) Assisted hydraulic, dual brake system	Yes	
b) Drum or disc brake	Specify front	
	Specify rear	
c) Mechanical parking brake, to act on transmission or rear wheels	Yes Specify	
d) Locally manufactured dual purpose tyres	Yes	
e) Optimum tyre size	Specify	
f) Tubed or Tubeless	Specify	
7. SUSPENSION AND STEERING.		
a) Front and rear suspension, independent with coil-spring and telescopic dampers	Specify Front:	
	Rear:	

b) Power assisted steering system.	Yes (mandatory)	
c) Right hand drive steering	Yes (mandatory)	
8. CREW CAB BODY.		
a) Roomy cab to seat 5 adults comfortably including driver, driver seat adjustable in the first row	Yes (mandatory)	
b) Adjustable seats for two with safety (seat) belts provided, first row.	Yes (mandatory)	
c) Second row to seat to seat at least 3 adults comfortably.	Yes (mandatory)	
d) Seats to have safety belts conforming to KEBS 06-664: 1985 standard.	Yes (mandatory)	
9. TOOL BOX BODY, BODY AND FINISH.		
a) Rear tool box body fitted with front fixed window glass and interior light.	Yes	
b) Single Rear door complete with fixed window glass and 2No side hinges.	Yes	
c) A suitable bull bar with a recessed Electric winch compatible fitment.	Yes (mandatory)	
d) Suitably fitted ladder rack on top rear cabin	Yes	
e) Rear heavy duty bumper bar complete with towing hook	Yes	
f) Suitable light grills to safeguard rear brake lights assembly.	Yes	
g) Applied polyurethane lining on the rear cargo carrier box.	Yes	
h) One revolving external spot light fitted.	Yes	
i) All exterior body panels made non- corrosive, and all external steel fitting to be galvanized or painted.	Yes (Mandatory)	
j) Anti-rust compound applied to underbody for seaside operation.	Yes	
k) Body finish, high gloss colour as specified by the user.	Yes (mandatory)	

10. ELECTRICAL SYSTEM AND INSTRUMENTS.		
a) System voltage, negative earth, with alternator charging	12V, Yes, Yes	
b) Battery capacity	1x12V, 70Ah	
c) Full lighting to conform to Cap 403, subs 23-Kenya Traffic Act	Yes	
d) Standard instruments and gauges (or warning lights) for charging circuit, oil pressure, coolant temperature etc.	Yes	
11. EQUIPMENT.		
a) Sun visors supplied 2 No.	Yes	
b) Rear view mirrors supplied 2 No. External, 1 No. Internal.	Yes	
c) FM, MW, SW radio cassette fitted.	Yes	
d) Spare wheel and external carrier supplied	Yes (mandatory)	
e) Manufacturer's standard tools, supplied	Specify	
f) Hydraulic (telescopic) jack and wheel brace, supplied	Yes (mandatory)	
g) Vehicle to be fitted with electronic speed governor.	Yes (mandatory)	
h) Governor to limit maximum speed to 80km/hr.	Yes (mandatory)	
i) Governor to be tamper proof.	Yes (mandatory)	
j) Governor to be certified by Senior Transport Engineer before fitting.	Yes (mandatory)	
k) Anti-theft alarm fitted.	Yes	
l) Metallic Hazard Triangles, standard First Aid KS-2094-2007 and 1Kg fire extinguisher.	Yes (mandatory)	
m) Supply addition Loose Floor rubber mats	Yes	
12. WARRANTY & FREE SERVICE.		
a) Specimen of vehicle warranty to be submitted when tendering	Yes	
b) Each vehicle supplied should carry a		

statement of warranty	Yes (mandatory)	
c) Vehicle warranty min., 12 Months or 40,000Kmwhichever comes first	Specify months Specify Kms (mandatory)	
d) Vehicle Free Service on Labour & Parts	Parts (Kms) Labour (Kms)	
13. MANUALS.		
a) All literature in the English language	Yes (mandatory)	
b) Repair manuals, supplied	Yes (mandatory)	
c) Parts catalogue/microfiche/CD, supplied	Yes (mandatory)	
d) Drivers handbook supplied	Yes	
e) Service schedule supplied	Yes	
14. OTHER REQUIREMENTS.		
a) Manufacturer's authorization supplied when tendering.	Yes (mandatory)	
b) Evidence (in form of purchase documents) of minimum 10 units sold and serviced in Kenya.	Yes (mandatory)	
c) Vehicle to be registered by Registrar of Motor Vehicles	Yes (mandatory)	
d) Vehicle to be inspected by the KPLC Engineer prior to delivery	Yes (mandatory)	
e) Franchise Holders and dealers who own fully fledged workshops with adequate equipment and facilities.	Yes (Mandatory)	
f) Body construction and all fitments to conform to Kenya Traffic Act CAP 403.	Yes (Mandatory)	
g) Chevrons and reflectors fitted on rear to conform to Kenya Traffic Act.	Yes	
h) Car identity on all Glasses and Lights	Yes	
i) Indicate name and physical addresses of all Dealers / Agents where Genuine Spares and back-up service can be obtained in at least five (5) major Kenya Power depots (Nairobi, Mombasa, Kisumu, Nyeri, Nakuru and Eldoret).	Attach list – Yes (mandatory)	

MICROBUS, 14-SEATER, 2400-2800 cc, DIESEL.**Quantity: 11****Specification No. KPLC-TPT-15-16-17****Description: Microbus, 2400 - 3000cc, Diesel****TENDERERS'S NAME.....**

	KPLC Requirements	Tenderer's Offer
1. GENERAL.		
a) Make	-	
b) Model	-	
c) Country of origin	-	
d) Manufacturer's literature/brochures and specification supplied	Yes (mandatory)	
e) A standard production micro-bus of latest design in current production.	Yes (mandatory)	
f) Supplied new	Yes (mandatory)	
g) Designed to heavy duty export specs, capable of operating in tropical conditions.	Yes,	
h) Suitable for passenger transportation over paved and unpaved (rough) roads.	Yes.	
i) To seat 14-adult passengers comfortably.	Yes (mandatory)	
2. DIMENSIONS AND WEIGHTS.		
a) Overall length min.	4,700 mm Yes (Mandatory)	
b) Overall width min.	1,700 mm	
c) Overall height approx.	2,000 mm	
d) Wheelbase min.	2,600 mm (mandatory)	
e) Kerb weight approx.	1,600 Kg	
f) Max. G.V.W. approx.	2,800 Kg	
g) Passenger room height, min.	1,370mm (mandatory)	
h) Ground Clearance, min.	190 mm (mandatory)	
3. ENGINE.		
a) Make	-	
b) Model	-	
c) Country of origin	-	
d) Engine performance curves supplied	Yes	

e) Diesel Engine,	Yes (mandatory)	
f) Water cooled, 4 stroke	Yes	
g) Piston displacement, within range.	2,400 – 3,000cc (mandatory)	
h) Number of cylinders, min.	4 No.	
i) Maximum power output /rpm, approx. min.	60kw/4800rpm Yes (mandatory)	
j) Maximum torque developed/rpm), min	170Nm/2,800rpm Yes (mandatory)	
k) Air cleaner type, disposable/oil bath	Specify	
l) Average fuel consumption (on full load)	Specify Kms/lit	
m) Fuel tank capacity, approx.	65 Lt	
4. CLUTCH AND TRANSMISSION.		
a) Clutch, coil spring type, dry single plate,	Specify	
b) Clutch system actuation, Hydraulic.	Yes	
c) Gearbox, synchromesh	Yes	
d) Number of speeds, min.	5F, 1R Yes	
5. BRAKES AND TYRES.		
a) Brakes, hydraulic-internal expanding drum	Yes	
b) Mechanical parking brake, to act on rear wheels	Yes	
c) Locally manufactured single purpose tyres	Yes	
d) Optimum tyre size	Specify	
6. SUSPENSION AND STEERING.		
a) Independent, heavy duty front and rear suspension	Yes	
b) Suspension, front and rear heavy duty leaf springs with telescopic shock absorbers at front	Specify Front Specify Rear	
c) Steering type Manual/assisted	Specify	
d) Right Hand Drive steering	Yes	
7. ELECTRICAL SYSTEM/INSTRUMENTS.		
a) System voltage, negative earth with alternator charging	12 V, Yes	
b) Battery capacity and size approx.	1X12v, 60Ah	
c) Full lighting to conform to Kenya Traffic Act.	Yes	
d) Standard instruments and gauges (or warning lights) for charging circuit, oil pressure, coolant temperature etc.	Yes	
8. BODY, SEATS AND FINISH.		
a) All body work to be protected against corrosion for seaside operation	Yes	

b) Long lasting upholstery vinyl material.	Yes	
c) High gloss body finishes and painted in KPLC corporate colours.	Yes (mandatory)	
d) Seating capacity (14 seats)	Yes (mandatory)	
e) All seats to be fitted with suitable safety belts.	Yes (mandatory)	
9. EQUIPMENT.		
a) Heavy duty type front fender.	Yes	
b) Laminated (safety) windshield.	Yes	
c) Sun visors supplied.	Yes	
d) Rear view mirrors (external and internal) supplied.	Yes	
e) Full size spare Tyre with rim and carrier mounted under truck.	Yes	
f) Hydraulic (telescopic) jack, wheel brace & manufacturer's standard tools.	Yes.	
g) Metallic Hazard Triangles, standard First Aid and 1Kg fire extinguisher	Yes	
h) Vehicle to be fitted with electronic speed governor.	Yes(mandatory)	
i) Governor to limit maximum speed to 80km/hr. certificate provided.	Yes (mandatory)	
j) Governor to be tamper proof.	Yes	
k) Governor to be certified by Senior Transport Engineer before fitting.	Yes (mandatory)	
l) Anti-theft alarm fitted.	Yes	
m) Supply two addition Loose Floor rubber mats.	Yes	
10. WARRANTY & FREE SERVICE.		
a) Specimen of vehicle warranty to be submitted when tendering.	Yes	
b) Each vehicle supplied to carry a statement of warranty.	Yes	
c) Vehicle warranty duration min. 12 Months	Specify Months	
d) 40,000Km whichever occurs first	Specify Kms	
e) d) Vehicle Free Service on Labour & Parts	Parts (Kms)	
	Labour (Kms)	
11. MANUALS.		
a) All literature in the English language	Yes (mandatory)	
b) Repair manuals, supplied	Yes (mandatory)	
c) Parts catalogue/microfiche/CD, supplied	Yes (mandatory)	
d) Drivers handbook supplied	Yes	
e) Service schedule supplied	Yes	

12. OTHER REQUIREMENTS.		
a) Vehicle to be registered by Registrar of Motor Vehicles.	Yes (mandatory)	
b) Vehicle to be inspected by the Senior Transport Engineer prior to delivery.	Yes (mandatory)	
c) Firm's status: Franchise/Dealer/Agent.	Specify	
d) Car identity on all Glasses and Lights.	Yes.	
e) Body construction and all fitments to conform to		
f) Kenya traffic act and to have a certificate from vehicle inspection centre.	Yes (mandatory)	
g) Chevrons and reflectors fitted on rear to conform to Kenya traffic act.	Yes.	
h) Indicate name and physical addresses of all Dealers/Agents where Genuine Spares and back-up service can be obtained In At least four major KPLC depots (Nairobi, Mombasa, Kisumu, Nyeri, Nakuru and Eldoret).	Attach list - obtained In At least four major KPLC depots Yes (mandatory)	

MINIBUS, 29 SEATER, 3800-4500cc DIESEL.

QUANTITY: 1

Specification No. KPLC-TPT-16-16-17

Description: Minibus, 29-Seater

Drawing No: 09366 SHEET H/1

Tenderers' name.....

	KPLC Requirements	Tenderer's Offer
1. GENERAL		
a) Make:	-	
b) Model:	-	
c) Country Of Origin:	-	
d) A standard production mini - bus of latest design in current production and marketed in Kenya.	Yes (mandatory)	
e) Supplied new	Yes (mandatory)	
f) Designed to heavy-duty export specifications, capable of operating in tropical conditions.	Yes	
g) Suitable for passenger transportation over paved and unpaved (rough) roads	Yes	
h) To seat 29 adult passengers comfortably complete with suitable seat belts.	Yes (mandatory)	
2. DIMENSIONS AND WEIGHTS		
a) Overall length min.	6500mm (mandatory)	

b) Overall width min.	1900 mm	
c) Overall height min.	2,100 mm	
d) Wheelbase min.	3400 mm (mandatory)	
e) Kerb weight min.	2200 Kg (mandatory)	
f) Max. G.V.W. min.	6000 Kg (mandatory)	
g) Passenger room height, min.	1,800mm (mandatory)	
h) Ground Clearance, min.	210 mm (mandatory)	
3. ENGINE		
a) Make	-	
b) Model	-	
c) Country of origin	-	
d) Engine performance curves supplied	Yes	
e) Diesel Engine,	Yes (mandatory)	
f) Water cooled, 4 stroke	Yes (mandatory)	
g) Piston displacement, within range.	3800cc - 4500cc Yes (mandatory)	
h) Number of cylinders, 4/6.	Specify	
i) Maximum power output /rpm, approx. min.	80kw/3000rpm (mandatory)	Yes
j) Maximum torque developed/rpm), min	270Nm/1800rpm (mandatory)	Yes
k) Air cleaner type, disposable/oil bath	Specify	
l) Average fuel consumption (on full load)	Specify Kms/lit	
m) Fuel tank capacity, approx.	100 Lt	

4. CLUTCH AND TRANSMISSION		
a) Clutch, coil spring type, dry single plate,	Specify	
b) Clutch system actuation, Hydraulic	Yes	
c) Gearbox, synchromesh	Yes	
d) Number of speeds, min.	5F, 1R (mandatory)	
e) Drive Configuration	4x2	
5. BRAKES AND TYRES		
a) Brakes, hydraulic-internal expanding drum	Yes	
b) Mechanical parking brake, to act on rear wheels	Yes	
c) Locally manufactured single purpose tyres	Yes	
d) Optimum tyre size	Specify	
6. SUSPENSION AND STEERING		
a) Independent, heavy duty front and rear suspension	Yes	
b) Suspension, front and rear heavy duty leaf springs with	Specify Front	
Telescopic shock absorbers at front	Specify Rear	
c) Steering type Manual/assisted	Power	
d) d) Right Hand Drive steering	Yes	
7. BODY CONSTRUCTION.		
a) Body constructed as per the supplied drawing.	Yes (mandatory)	
b) Body floor fabricated from 3.2mm thick chequer plate mild steel (full width) reinforced at equal distances with box/channel sections.	Yes	

c) Interior cover carpet.	Yes	
d) Interior roof fitted with MDF roof panelling.	Yes	
e) Interior waist fitted with carpet.	Yes	
f) Floor bearer (height and width) 12''x85''.	Yes	
Passenger door position fixed at LHS the centre.	Yes	
g) Passenger door type should be knife jacking.	Yes	
h) Fixed passenger seats complete with Armrest fitted.	Yes	
i) Seating capacity should be 29 passengers.	Yes	
j) Side fixed glasses be flat	Yes	
k) Single Emergency door glass	Yes	
l) Windows top fixed and tinted, bottom sliding and clear.	Yes,(mandatory)	
m) Fitted with well-ventilated vents.	Yes	
n) Undercarriage for Tyre only –above chassis.	Yes	
o) Front shape curved to march windshield and rear shape flat with straight skirt line as per the given drawing.	Yes	
p) Suitable colour on all upholstery and carpet as specified by the user.	Yes	
q) Foam thickness –high-density size (100mm).	Yes (mandatory)	
r) Original headlights and taillights assemblies.	Yes	
8. ELECTRICAL SYSTEM/INSTRUMENTS		
a) System voltage, negative earth with alternator charging	12 V, Yes	
b) Battery capacity and size approx.	2X12v, 65Ah	
c) Full lighting to conform to Cap 403, -Kenya Traffic Act	Yes	
d) Standard instruments and gauges (or warning lights) for charging circuit, oil pressure, coolant temperature etc.	Yes	

9. BODY, SEATS AND FINISH		
a) All body work to be thoroughly cleaned before painting. Both internal and exterior finish to be proceeded by one coat (red oxide) and undercoat to protect against corrosion for seaside operation.	Yes (mandatory)	
b) Long lasting upholstery	Special material	
c) High gloss body finish, colour to be painted in KPLC colours as specified by the user.	Yes (mandatory)	
10. EQUIPMENT		
a) Heavy duty type front fender	Yes	
b) Laminated (safety) windshield	Yes	
c) Sun visors supplied	Yes	
d) Rear view mirrors (external and internal) supplied	Yes	
e) Full size spare tyre with rim and carrier mounted under truck	Yes	
f) Hydraulic (telescopic) jack, wheel brace & manufacturer's standard tools,	Yes,	
g) Metallic Hazard Triangles, Standard First Aid KS 2094-2007 and 1 Kgs fire extinguisher.	Yes (mandatory)	
h) Vehicle to be fitted with electronic speed governor	Yes (mandatory)	
i) Governor to limit maximum speed to 80km/hr	Yes (mandatory)	
j) Governor to be tamper proof (sealed).	Yes (mandatory)	
k) Governor to be certified by CM&TE before fitting	Yes (mandatory)	
l) Anti-theft alarm fitted	Yes	
m) Supply addition Loose Floor rubber mats	Yes	
n) FM Radio cassette receiver fitted.	Yes	

11. WARRANTY & FREE SERVICE		
a) Specimen of vehicle warranty to be submitted when tendering	Yes	
b) Each vehicle supplied to carry a statement of warranty	Yes	
c) Vehicle warranty duration min. 12 Months	Specify Months	
40,000Km whichever occurs first	Specify KMS Yes (mandatory)	
d) Vehicle Free Service on Labour & Parts	Parts (Kms)	
	Labour (Kms)	
12. MANUALS		
a) All literature in the English language	Yes (mandatory)	
b) Repair manuals, supplied	Yes (mandatory)	
c) Parts catalogue/microfiche/CD, supplied	Yes (mandatory)	
d) Drivers handbook supplied	Yes	
e) Service schedule supplied	Yes	
13. OTHER REQUIREMENTS.		
a) Vehicle to be registered by Registrar of Motor Vehicles	Yes (mandatory)	
b) Vehicle to be inspected by the Chief Transport engineer prior to delivery	Yes (mandatory)	
c) Firm's status: Franchise/Dealer/Agent	Specify	
d) Body construction and all fitments to conform to CAP 403	Yes (mandatory)	
e) Kenya traffic act and to have a certificate from vehicle inspection centre.	Yes (mandatory)	
f) Chevrons and reflectors fitted on rear to conform to Kenya traffic act.	Yes	
g) Car identity on all Glasses and Lights	Yes	

<p>h) Indicate name and physical addresses of all Dealers/Agents where Genuine Spares and back-up service can be obtained In At least four major KPLC depots (Nairobi, Mombasa, Kisumu, Nyeri, Nakuru and Eldoret).</p>	<p>Attach list - obtained In At least four major KPLC depots (Mandatory)</p>	
---	---	--

5.0 TON LIFTING CAPACITY FORKLIFT.

QUANTITY: 1

Specification No:KPLC-TPT-17-16-17

Description: 5.0 Ton capacity Fork Lift capable of operating in a standard transportation container.

Tenderers' name.....

	KPLC Requirements	Tenderer's Offer
1. GENERAL.		
a) Make	-	
b) Model	-	
c) Country of origin	-	
d) Manufacturer's Authorization Supplied	Yes (mandatory)	
e) Manufacturer's Literature & Brochures Supplied.	Yes (mandatory)	
f) Technical Specification Sheet fully completed and submitted.	Yes (mandatory)	
g) A standard production Diesel propelled Fork lift of latest design in robust construction in current production marketed in Kenya	Yes (mandatory)	
h) Supplied new.	Yes (mandatory)	
i) Designed for heavy duty specifications, capable of operating in a limited space, inside a standard transportation container.	Yes (mandatory)	
2. WEIGHTS.		
a) Maximum Load capacity at load centre of 600mm.	5000Kg Yes (Mandatory)	
b) Un laden weight without load, front/rear min.	3000Kg/4000Kg	
c) Axle loading with load, front/rear min.	11000Kg/1200Kg	

d) Service weight approx.	7000Kg, Yes	
3. WHEELS AND TYRES.		
a) Tyres: Industrial solid tyres	Yes(Mandatory)	
b) Wheels, 4No Front(driven) and 2No Rear	Yes(Mandatory)	
c) Track width front, max.	1790mm	
d) Track width rear, max.	1270mm	
e) Tyres, single drive, Drive, 300 x 15	Yes (mandatory)	
f) Tyres, single drive, Drive, 7.00 x 15	Yes (mandatory)	
4. DIMENSIONS.		
a) Wheelbase min.	2100mm Yes (Mandatory)	
b) Mast/Fork tilts, forward max.	15°	
c) 2 Stage clear view cut mast, overall height, max.	4100mm	
d) Free lift, min.	1000mm	
e) Mast/Fork tilt, backward max.	12°	
f) Overall height, mast lowered, max.	2300mm	
g) Free lift	Specify	
h) Lift height min.	4100mm	
i) Height of mast, extended.	Specify	
j) Cab height approx. min.	2300mm	
k) Seat height approx. min.	1200mm	
l) Towing coupling height, min.	500mm	
m) Overall length, min.	4500mm	

n) Length to face of forks min.	3300mm	
o) Fork carriage width, min.	1500mm Yes (Mandatory)	
p) Fork carriage length, min.	1800mm Yes (Mandatory)	
q) Ground clearance under mast, with load min.	190mm Yes (Mandatory)	
r) Ground clearance, centre of wheelbase min.	230mm Yes (Mandatory)	
s) Outer turning radius approx. min.	2900mm	
t) Inner turning radius min.	1300mm	
5. PERFORMANCE.		
a) Travel speed with/without load.	Specify	
b) Lifting speed with/without load	Specify	
c) Lowering speed with/without load.	Specify	
d) Transmission-3-speed hydrodynamic	Yes (mandatory)	
e) Hydraulic service brake	Yes (mandatory)	
6. ENGINE.		
a) Engine manufacture/type	Specify	
b) Engine output, within range.	55-60Kw@2400rpm Yes (mandatory)	
c) Power: Diesel	Yes (Mandatory)	
d) Engine torque approx.	500Nm/1200rpm	
e) Turning speed approx.	2000rpm	
f) Number of cylinders.	4 Yes (mandatory)	
g) Engine capacity (displacement) within range.	3500cc-4000cc. Yes(Mandatory)	

7. ACCESSORIES.		
a) Maintenance & Service manual	Yes	
b) Operational Manual	Yes	
c) Spare Parts Catalogue	Yes	
d) Repair Manuals	Yes	
e) Supply complete with 2 No. spare wheels, wheel spanner and hydraulic bottle jack.	Yes(Mandatory)	
8. OTHER REQUIREMENTS.		
a) Manufacturers' authorization supplied when tendering.	Yes (mandatory)	
b) Evidence (in form of purchase documents) of minimum 10 units sold and serviced in Kenya.	Yes (Mandatory)	
c) Franchise Holders and dealers who own fully fledged workshop(s) equipment with adequate facilities for servicing the equipment. Attach proof of ownership/lease and list of equipment installed	Yes (Mandatory)	
d) Body construction and all fitments to conform to Kenya traffic act and to have a certificate from vehicle inspection center.	Yes (mandatory)	
e) Plant to be inspected by the KPLC Engineer prior to delivery.	Yes (mandatory)	
f) Indicate name and physical addresses of all Dealers/Agents where Genuine Spares and back-up service can be obtained in at least one major Kenya Power depots (Nairobi, Mombasa, Kisumu, Nyeri, Nakuru and Eldoret).		

8.0 TON LIFTING CAPACITY FORKLIFT.**QUANTITY: 1****Specification No:KPLC-TPT-18-16-17****Description: 8.0 Ton capacity Fork Lift.****Tenderers' name.....**

	KPLC Requirements	Tenderer's Offer
1. GENERAL		
a) Make	-	
a) Model	-	
b) Country of origin	-	
c) Manufacturer's literature/brochures and specification supplied.	Yes (Mandatory)	
d) A standard production, 8.00 Ton Fork lift of latest design in robust construction in current production marketed in Kenya	Yes (Mandatory)	
e) Supplied new	Yes (Mandatory)	
f) Designed to heavy-duty export specs, capable of operating in tropical conditions.	Yes	
2. WEIGHTS.		
a) Load capacity/rated load, min.	8000Kg Yes (Mandatory)	
b) Un laden (service) weight min.	11000Kg	
c) Axle loading with load, front/rear min.	17000Kg/2000Kg	
d) Axle loading without load, front/rear min.	5000Kg/6000Kg	
3. WHEELS AND TYRES.		
a) Tyres: Industrial solid tyres	Yes (Mandatory)	
b) Wheels, 4 No front (driven) and 2 No rear	Yes (Mandatory)	
c) Track width front min.	2100mm	
d) Track width rear min.	1600mm	
4. DIMENSIONS.		
a) Wheelbase min.	2400mm Yes (Mandatory)	
b) Mast/Fork tilts, forward max.	15°	
c) Mast/Fork tilt, backward max.	12°	
d) Height, mast lowered approx.	4000mm	
e) Free lift	Specify	
f) Lift height min.	5500mm Yes (Mandatory)	

g) Height of mast, extended.	Specify	
h) Cab height approx. min.	2600mm	
i) Seat height approx. min.	1600mm	
j) Towing coupling height min.	500mm	
k) Overall length min.	4880mm	
l) Length to face of forks min.	3650mm	
m) Fork carriage width, min.	2000mm Yes (Mandatory)	
n) Fork carriage length, min.	1800mm Yes (Mandatory)	
o) Ground clearance under mast, with load approx. min.	200mm	
p) Ground clearance, center of wheelbase min.	250mm	
q) Outer turning radius approx. min.	3200mm	
r) Inner turning radius approx. min.	1400mm	
5. PERFORMANCE.		
a) Travel speed with/without load.	Specify	
b) Lifting speed with/without load	Specify	
c) Lowering speed with/without load.	Specify	
d) Transmission-3-speed hydrodynamic	Yes (mandatory)	
e) Hydraulic service brake	Yes (mandatory)	
6. ENGINE.		
a) Engine manufacture/type	Specify	
b) Engine output within range.	80-90Kw/2400rpm Yes (mandatory)	
c) Power: Diesel	Yes (Mandatory)	
d) Engine torque approx.	500Nm/1200rpm	
e) Turning speed approx.	2000rpm	
f) Number of cylinders.	4Cylinders	
g) Engine capacity (displacement) within range.	3500cc-4500cc. Yes(Mandatory)	
7. ACCESSORIES.		
a) Maintenance & Service manual	Yes	
b) Operational Manual	Yes	
c) Spare Parts Catalogue	Yes	
d) Repair Manuals	Yes	
e) Supply complete with 2 No. spare wheels, wheel spanner and hydraulic bottle jack.	Yes(Mandatory)	
8. OTHER REQUIREMENTS.		
a) Fork lift to be registered by Registrar of Motor Vehicles	Yes (mandatory)	
b) Fork lift to be inspected by the Chief Transport engineer prior to delivery	Yes (mandatory)	

c) Firm's status: Franchise/Dealer/Agent	Specify	
d) Indicate name and physical addresses of all Dealers/Agents where Genuine Spares and back-up service can be obtained In At least four major Kenya Power depots (Nairobi, Mombasa, Kisumu, Nyeri, Nakuru and Eldoret).	Attach list - At least four major KPLC depots (mandatory)	
e) Body construction and all fitments to conform Cap 403 Kenya Traffic Act.	Yes (Mandatory)	

3-WHEEL LOGGER- LOADER.

QUANTITY: 4

Specifications: No: KPLC-TPT-19-16-17

Description: 3-Wheel logger-loader

Tenderer's name:.....

	KPLC Requirements	
1. GENERAL.		
a) Manufacturer's Authorization Supplied	Yes (mandatory)	
b) Manufacturer's Literature & Brochures Supplied.	Yes (mandatory)	
c) Technical Specification Sheet fully completed and submitted.	Yes (mandatory)	
d) A standard production, 3-wheel logger -loader of latest design in robust construction in current production marketed in Kenya.	Yes, (Mandatory)	
e) Supplied new.	Yes (mandatory)	
f) Designed to heavy-duty export specs, capable of operating in tropical conditions on paved and unpaved surface.	Yes, (Mandatory)	
2. ENGINE.		
g) Engine displacement, within range.	3000-4000cc Yes (Mandatory)	
h) Engine configuration: Four Cylinder in-line	Yes	
i) Cooling System: Air cooled by engine fan drive	Yes	
j) Net Power.	49w(60hp)@2000rpm Yes (Mandatory)	
k) Max Torque achieved.	230Nm @1600rpm Yes (Mandatory)	
3. TRANSMISSION.		
a) Pump: Vickers TA1919	Yes	
b) Type: Variable displacement tandem axial piston pump	Yes	
c) Controls: Direct linkage via foot pedals	Yes	
d) Rating Pressure approx: 30,000 kPa	Yes	

e) Flow rate approx.	85 l/min@2100rpm Yes (Mandatory)	
f) Motors:	Specify	
g) Type: Axial Piston	Yes	
h) Rating Pressure:	31000kPa (4500psi) Yes, (Mandatory)	
i) Rating Flow:	80 l/min @2000rpm	Yes
j) Wheel drives: Double Planetary reduction in series	Specify	
k) Configuration: Double planetary reduction in series with planetary reduction gears.	Yes	
l) Reduction Ratio approx:	67:1	Yes
m) Travel Speed:	9.5km/h	Yes
n) Tractive effort:	32.3KN	Yes
4. HYDRAULIC SYSTEM AND EQUIPMENT.		
a) Operating weights min.	5090Kg	Yes
b) Grapple capacity, min.	0.35m ²	Yes (Mandatory)
c) Grapple rotator-heavy duty 5 ton continuous rotator	Yes (Mandatory)	
d) Pumps: Open centre dual circuit.	Yes	
e) Type: Fixed displacement van pump	Yes	
f) Application: Grapple, rotator and tele-boom	Yes, (Mandatory)	
g) Operating pressure:	13800kPa (2000 psi)	Yes, (Mandatory)
h) Type: Fixed displacement gear pump	Yes	
i) Application: Attachments	Yes	
j) Flow rate:	35 l/min @2000 rpm	Yes
k) Pressure, min:	1500 kPa	Yes, (Mandatory)
5. STEERING SYSTEM.		
a) Treadle control system	Specify	
b) Front wheel hydraulic skid steer via foot operated treadle control system.	Yes, (Mandatory)	
6. BOOM MAST.		
a) Teleboom	Yes, (Mandatory)	
7. CABIN.		
a) Type: Integral with steel frame. No doors.	Yes, (Mandatory)	

b) Guarding: HD windscreen guard & bonnet guard	Yes, (Mandatory)	
c) Ventilation: Open ventilation	Yes, (Mandatory)	
8. ACCESSORIES.		
a) Tool kits and other standard tools	Yes	
b) vehicle accessories	Yes	
c) Identity markings to included	Yes	
d) Floor Mats	Yes	
e) Fire Extinguisher	Yes	
f) First Aid Kit	Yes	
g) 2 No spares catalogue	Yes	
h) 2 No Operational Manual	Yes	
i) 2 No Repair Manuals	Yes	
9. OTHER REQUIREMENTS.		
a) Manufacturer's authorization supplied when tendering.	Yes (mandatory)	
b) Evidence (in form of purchase documents) of minimum 10 units sold and serviced in Kenya.	Yes (mandatory)	
c) 3-Wheel loader to be registered by Registrar of Motor Vehicles.	Yes (mandatory)	
d) 3-Wheel loader to be inspected by the Chief Transport engineer prior to delivery.	Yes (mandatory)	
e) Body construction and all fitments to conform Cap 403 Kenya Traffic Act.	Yes (Mandatory)	
f) Indicate name and physical addresses of all dealers/agents where Genuine Spares and back-up service can be obtained in at least one major Kenya Power depots (Nairobi, Mombasa, Kisumu, Nyeri, Nakuru and Eldoret).	Attach list -	

PRIME MOVER, 6X4, COMPLETE WITH LOGGING-SEMI-TRAILER.**QUANTITY: 1****Specification No. KPLC-TPT-20-16-17.****Description: Prime mover, 6x4, Diesel, Complete with standard-logging-semi-trailer.****Tenderers' name.....**

	KPLC Requirements	Tenderer's
1. GENERAL.		
a) Make	-	
b) Model	-	
c) Country of origin	-	
d) Manufacturer's Authorization Supplied	Yes (Mandatory)	
e) Manufacturer's Literature & Brochures Supplied.	Yes (Mandatory)	
f) Technical Specification Sheet fully completed and submitted.	Yes (Mandatory)	
g) A standard production, 6x4, Diesel utility Prime mover complete with 30 ton capacity, 12m (40") long, three rear axles logging-semi-trailer of latest design in robust construction in current production and marketed in Kenya.	Yes (Mandatory)	
h) Prime mover (tractor) suitable for fitting 16.0 ton high lifting log-lift crane after cab chassis as per the supplied drawing sheet.	Yes (Mandatory)	
i) Designed to heavy-duty export specifications, capable of pulling 12m long logging-semi-trailer over paved and unpaved roads.	Yes (Mandatory)	
j) Supplied new.	Yes (Mandatory)	
k) Standard logging-semi-trailer locally manufactured.	Yes (Mandatory)	
l) Control Forward/Normal	Specify	
2. DIMENSIONS AND WEIGHTS.		
a) Overall length, min.	6600 mm Yes (Mandatory)	
b) Coupler offset, min.	300mm Yes (Mandatory)	
c) Front fitting radius, min.	2700mm Yes (Mandatory)	
d) Lower fitting radius, min.	2000 Yes (Mandatory)	
e) Coupler height	1420mm Yes (Mandatory)	
f) Overall width, min.	2400 mm, Yes	

g) Overall Height, min.	2850 mm (Mandatory)	
h) Wheel base approx.	4,200 mm Yes (Mandatory)	
i) Cab to rear axle centre, min.	3,000mm Yes (Mandatory)	
j) Kerb weight approx.	8,100 Kg	
k) g) Max. G.V.W. approx.	28,000Kg. (Mandatory)	
l) Max. G.C.W. approx.	50,000Kg Yes (Mandatory)	
m) Ground Clearance, min.	260 mm (Mandatory)	
n) Min. turning radius (tractor only)	7.0m (Mandatory)	
3. ENGINE.		
a) Make	-	
b) Model	-	
c) Country of origin	-	
d) Engine performance curves supplied	Yes	
e) Diesel Engine, water cooled, 4 stroke cycle	Yes (Mandatory)	
f) Mode of aspiration. (Natural/Turbo)	Specify	
g) Piston displacement, min.	11,900cc Yes (mandatory)	
h) Number of cylinders, 8/12	Specify	
i) Maximum power output /rpm, min	220Kw/2000rpm. Yes (Mandatory)	
j) Maximum torque developed/rpm), min.	1200Nm/1200rpm. Yes (Mandatory)	
k) Air cleaner type, disposable/oil bath	Specify	
l) Maximum engine speed, min.	2300rpm	
m) Oil and fuel filter type	Disposable	
n) Average fuel consumption (on full load)	Specify Kms/Lit.	
o) Fuel tank capacity, min.	360 Litres	
4. CLUTCH AND TRANSMISSION.		
a) Clutch, dry single plate, coil spring type	Yes	
b) Clutch system actuation, Hydraulic	Yes	
c) Gearbox, synchromesh	Yes	
d) Number of speeds, min.	8F, 2R Yes (Mandatory)	
e) Drive configuration	6x4 Yes (mandatory)	
5. BRAKES TYRESAND SUSPENSION.		
a) Brakes hydraulic-pneumatic assisted, Exhaust brakes, Trailer brakes, and Parking brakes.	Yes	

b) Mechanical parking brake, to act on transmission	Yes	
c) Rear tyres	Dual	
d) Tyres size locally manufactured	Yes	
e) Optimum tyre size	Specify	
f) Suspension, front and rear heavy-duty leaf springs with telescopic shock absorbers at front. Trunion type suspension at rear.	Yes	
6. STEERING, CONTROL AND CAB.		
a) Right Hand Drive steering	Yes	
b) Power assisted steering type	Yes (mandatory)	
c) All steel, spacious cab to seat 3 passengers comfortably	Yes	
d) Adjustable driver's seat.	Yes	
e) Seat belts.	Yes	
7. LOGGING SEMI-TRAILER FITTINGS AND FABRICATION.		
a) A standard production, open side, 40'' long logging semi-trailer complete with three braked axle suitable for transporting poles.	Yes (mandatory)	
b) 12No. Standard container securing hooks to hold the side supporting beams.	Yes (mandatory)	
c) 6No. side supporting beams complete with fastening chain hooks	Yes (mandatory)	
d) Platform body floor made of mild steel plate of 3mm thickness.	Yes (mandatory)	
e) Fixed front, middle and rear supporting beams fully reinforced at the edges.	Yes (mandatory)	
8. ELECTRICAL SYSTEM/INSTRUMENTS.		
a) System voltage, negative earth	24V	
b) Battery capacity and size	2x12v, 150AH	
c) Full lighting to conform to Cap 403, subs 23-Kenya Traffic Act	Yes	
d) Standard instrumentation panels and all operational control switches.	Yes	
9. EQUIPMENT.		
a) Heavy duty type front fender.	Yes	
b) 2 No. spare wheels.	Yes (mandatory)	
c) Sun visors supplied two.	Yes	
d) Rear view mirrors (external and internal) supplied	Yes	
e) Full size spare tyres with rim and carrier for the semi-trailer.	2No. Yes (mandatory)	

f) Heavy duty hydraulic (telescopic) jack, wheel brace & manufacturer's standard tools,	Yes	
g) Hazard Triangles, First Aid kit KS-2094-2007 and fire extinguisher.	Yes (mandatory)	
h) Vehicle to be fitted with electronic speed governor.	Yes (mandatory)	
i) Governor to limit maximum speed to 80km/hr.	Yes (mandatory)	
j) Governor to be tamper proof.	Yes (mandatory)	
k) Governor to be certified by CM&TE before fitting.	Yes (mandatory)	
l) Engine immobilizer system fitted.	Yes	
m) Supply additional Loose Floor rubber mats.	Yes	
n) Provide loose Tyre inflating hose pipe (at least 20 meters long)	Yes (mandatory)	
o) Chevrons and reflectors fitted on rear to conform to Kenya traffic act.	Yes	
p) Car identity on all Glasses and Lights.	Yes	
10. WARRANTY & FREE SERVICE.		
a) Specimen of vehicle warranty to be submitted when tendering	yes	
b) Each vehicle supplied to carry a statement of warranty	Yes	
c) Vehicle warranty duration min. 12 Months	Specify (months)	
d) 40,000Km whichever occurs first	Specify (KMS) (mandatory)	
e) Vehicle Free Service on Labour & Parts	Parts (Kms)	
	Labour (Kms)	
11. MANUALS.		
a) All literature in the English language.	Yes (mandatory)	
b) Repair manuals/ microfiche/CD, supplied.	Yes (mandatory)	
c) Parts catalogue/microfiche/CD supplied.	Yes (mandatory)	
d) Driver's handbook supplied.	Yes	
e) Service schedule supplied.	Yes (mandatory)	
12. OTHER REQUIREMENTS.		
a) Manufacturer's authorization supplied when tendering.	Yes (mandatory)	
b) Evidence (in form of purchase documents) of minimum 10 units sold and serviced in Kenya.	Yes (Mandatory)	
c) Franchise Holders and dealers who own fully fledged Workshops with adequate equipment and facilities.	Yes (Mandatory)	
d) Body construction and all fitments to conform to Kenya traffic act and to have a certificate from vehicle inspection centre.	Yes (mandatory)	
e) Prime mover to be inspected by the KPLC Engineer prior to delivery.	Yes (mandatory)	

f) Prime mover and semi-trailer to be registered by Registrar of Motor Vehicles prior delivery.	Yes (mandatory)	
g) Indicate name and physical addresses of all Dealers/Agents where genuine spares and back-up service can be obtained in at least four (5) major Kenya Power depots (Nairobi, Mombasa, Kisumu, Nyeri, Nakuru and Eldoret).	Attach list – Yes (mandatory)	

3.5 TON TRUCK MOUNTED LIFTING CRANE COMPLETE WITH GRAPPLE.**QUANTITY: 1****DESCRIPTION: 3.5 Ton (150 KNm) capacity log lifting crane complete with grapple****SPECIFICATIONS: KPLC-TPT-21-16-17****TENDERER'S NAME:.....**

	KPLC Requirements	Tenderer's Offer
1. GENERAL.		
a) Make		
b) Model		
c) Country of Origin		
d) Manufacturer's Authorization for both Crane & Grapple Supplied	Yes (mandatory)	
e) Manufacturer's Literature & Brochures for both Crane & Grapple Supplied.	Yes (mandatory)	
f) Technical Specification Sheet fully completed and submitted.	Yes (mandatory)	
g) A standard production, high capacity log lifting Truck mounted knuckle boom crane of latest design in robust construction in current production and marketed in Kenya.	Yes (mandatory)	
h) Supplied new and be fitted onto the supplied 6x4, Prime mover.	Yes (mandatory)	
i) Suitable crane ready to operate with the Pole Grapple.	Yes (mandatory)	
2. DESIGN AND CONSTRUCTION.		
a) Lifting Capacity, min.	150KNm Yes (mandatory)	
b) Equipment to be fitted on a supplied 6x4, Prime mover chassis.	Yes.	
c) Minimum Hydraulic Outreach standard.	9.0m Yes (mandatory)	
d) Hydraulic boom extension, min.	9.0m	
e) Recoil flow	70-90littres/min	
f) Working pressure	22.0 Mpa	

g) Outreach manual extension	12.8m	
h) Lifting height above installation level. Hydraulic /manual.	10.0/12.2m	
i) Outreach-Lifting Capacity, standard at 3.8m	3550Kgs (mandatory)	
j) Outreach- Lifting Capacity , standard at 5.0m	2950kg (mandatory)	
k) Outreach- Lifting Capacity , standard at 7.0m	2200kg (mandatory)	
l) Outreach-Lifting Capacity , standard at 8.0m	1850kg (mandatory)	
m) Rec. oil flow	70-90l/min.	
n) Max working pressure	22MPa Yes (mandatory)	
o) Oil in tank	45L	
p) Tank capacity	60L	
q) Slewing angle max.	415°-430°	
r) Max. Slope viable at full capacity.	5 °	
s) Slewing torque, gross.	31KNm Yes (mandatory)	
t) Slewing speed.	15m/s	
u) Lifting speed at standard hydraulic outreach and rec.oil flow	0.7m/s-5.3m	
v) Height in folded position	2508mm	
w) Width in folded position	2500mm	
x) Installation space needed	1095mm	
y) Top seat included with adjustable seat height	Yes (mandatory)	
z) Log heel	Yes (mandatory)	
3. WEIGHTS.		
a) Loader in standard version without support legs.	1800-2100Kg (mandatory)	
b) Top seat	135Kg	
c) Frame attachments	Specify	
d) Support leg equipment	395kg	
e) Oil tank	36kg	
f) Power Take off	Yes (mandatory)	
g) High performance pump	270 Bars Yes (mandatory)	
h) Flow rate	55 liters/Min Yes (mandatory)	
i) Crane performance –top seat	Yes (mandatory)	
j) Anchoring Bolts	Yes	
k) High Pressure hoses	Yes	
l) Crane performance - Both sides	Yes	
m) Identical lever sequence shown	Yes	

n) Crane will include Load Bearing Valves	Yes	
o) Crane will include Load Failure Valves	Yes	
p) After Sales service	Yes	
q) Test Certificate for crane Offered	Yes	
4. HIGH VOLT ALERT SYSTEM.		
a) PTO engaging high volt alert system	Yes (mandatory)	
b) Nominal operating temperature -5°C to +55°C	Yes	
c) Sound warning tone-85db	Yes	
d) Visual warning	Yes	
e) Detection range-50m	Yes	
f) Manufacturers authorization for the High Volt Alert System	Yes (mandatory)	
5. POLE GRAPPLE AND ROTATOR		
a) 2 function coupled heavy duty rotating grapple for timber	Yes (mandatory)	
b) Max weight of rotator and grapple	275kgs – 325Kgs Yes (mandatory)	
c) Rotator slewing angle	360°	
d) Grapple capacity, minimum	1000Kgs Yes (mandatory)	
e) Fixed grapple connection with folding with crane	Yes (mandatory)	
f) Grapple safety brake	Yes (mandatory)	
g) Grapple capable of handling 40' wooden poles	Yes (mandatory)	
h) Grapple holding area minimum 0.4 m ²	Yes (mandatory)	
i) Grapple jaw pressure minimum 19.6 KN	Yes (mandatory)	
j) Catalogue	Yes (mandatory)	
6. ACCESSORIES.		
a) Maintenance & Service manual	Yes	
b) Operational Manual	Yes	
c) Spare Parts Catalogue	Yes	
d) Integrated diagnostic system with digital hydraulic pressure sensor, Hour meter and hydraulic pressure engaging fitted, attach literature.	Yes (mandatory)	
e) Manufacturers Authorization for Hour Meter	Yes (mandatory)	
f) LED flood light provided installed onto crane lighting in direction of a crane tip operations.	Yes (mandatory)	
7. WARRANTY AND FREE SERVICE		
a) Specimen of crane warranty to be submitted when tendering.	Yes (mandatory)	

b) Each crane supplied to carry a statement of warranty.	Yes (mandatory)	
c) Truck mounted crane warranty duration min. 12 Months / 200 hours whichever occurs first.	Specify Months Yes (mandatory)	
Crane Free Service on Labour & Parts	Parts (Kms) Labour (Kms)	
8. MANUALS		
a) All literature in the English language	Yes (mandatory)	
b) Repair manuals, supplied	Yes (mandatory)	
c) Parts catalogue/ microfiche/CD, supplied	Yes (mandatory)	
d) Operator's handbook supplied	Yes	
e) Service schedule supplied	Yes	
f) Training included.	Yes (mandatory)	
g) Crane test certificate provided	Yes (mandatory)	
h) Additional safety features – provide detail	Yes	
9. OTHER REQUIREMENTS.		
a) Manufacturer's authorization supplied when tendering.	Yes (mandatory)	
b) Evidence (in form of purchase documents) of minimum 10 units sold and serviced in Kenya.	Yes (Mandatory)	
c) Franchise Holders and dealers who own fully fledged workshop(s) equipment with adequate facilities.	Yes (Mandatory)	
d) Body construction and all fitments to conform to Kenya Traffic Act and to have a certificate from vehicle inspection centre.	Yes (mandatory)	
e) Crane to be inspected by the Senior Transport Engineer prior to delivery.	Yes (mandatory)	
f) Crane to be fitted onto the supplied cab chassis truck.	Yes (mandatory)	
g) Indicate name and physical addresses of all Dealers/Agents where Genuine Spares and back-up service can be obtained in at least one major Kenya Power depots (Nairobi, Mombasa, Kisumu, Nyeri, Nakuru and Eldoret).	Attach list – Yes (mandatory)	

PRIME MOVER, 6X4, COMPLETE WITH SEMI-TRAILER.**QUANTITY: 2****Specification No. KPLC-TPT-22-16-17.****Description: Prime mover, 6x4, Diesel, Complete with standard semi-trailer.****Tenderers' name.....**

	KPLC Requirements	Tenderer's
1. GENERAL.		
a) Make	-	
b) Model	-	
c) Country of origin	-	
d) Manufacturer's Authorization Supplied	Yes (Mandatory)	
e) Manufacturer's Literature & Brochures Supplied.	Yes (Mandatory)	
f) Technical Specification Sheet fully completed and submitted.	Yes (Mandatory)	
g) A standard production, 6x4, Diesel utility Prime mover complete with 30 ton capacity, 12m (40') long, three rear axles semi-trailer of latest design in robust construction in current production and marketed in Kenya.	Yes (Mandatory)	
h) Prime mover (tractor) suitable and designed to heavy-duty export specifications, capable of pulling 12m (40') long semi-trailer over paved and unpaved roads.	Yes (Mandatory)	
i) Designed to heavy-duty export specifications, capable of pulling 12m (40') long semi-trailer over paved and unpaved roads.	Yes (Mandatory)	
j) Supplied new.	Yes (Mandatory)	
k) Standard semi-trailer locally manufactured.	Yes (Mandatory)	
l) Control Forward/Normal	Specify	
2. DIMENSIONS AND WEIGHTS.		
a) Overall length, min.	6600 mm Yes (Mandatory)	
b) Coupler offset, min.	300mm Yes (Mandatory)	
c) Front fitting radius, min.	2700mm Yes (Mandatory)	
d) Lower fitting radius, min.	2000 Yes (Mandatory)	
e) Coupler height	1420mm Yes (Mandatory)	
f) Overall width, min.	2400 mm, Yes	

g) Overall Height, min.	2850 mm (Mandatory)	
h) Wheel base approx.	4,200 mm Yes (Mandatory)	
i) Cab to rear axle centre, min.	3,000mm Yes (Mandatory)	
j) Kerb weight approx.	8,100 Kg	
k) Max. G.V.W. approx.	28,000Kg. Yes (Mandatory)	
l) Max. G.C.W. approx.	50,000Kg Yes (Mandatory)	
m) Ground Clearance, min.	260 mm (Mandatory)	
n) Min. turning radius (tractor only)	7.0m (Mandatory)	
3. ENGINE.		
a) Make	-	
b) Model	-	
c) Country of origin	-	
d) Engine performance curves supplied	Yes	
e) Diesel Engine, water cooled, 4 stroke cycle	Yes (Mandatory)	
f) Mode of aspiration. (Natural/Turbo)	Specify	
g) Piston displacement, min.	11,900cc Yes (mandatory)	
h) Number of cylinders, 8/12	Specify	
i) Maximum power output /rpm, min	220Kw/2000rpm.	
j) Maximum torque developed/rpm), min.	1200Nm/1200rpm.	
k) Air cleaner type, disposable/oil bath	Specify	
l) Maximum engine speed, min.	2300rpm	
m) Oil and fuel filter type	Disposable	
n) Average fuel consumption (on full load)	Specify Kms/Lit.	
o) Fuel tank capacity, min.	360 Litres	
4. CLUTCH AND TRANSMISSION.		
a) Clutch, dry single plate, coil spring type	Yes	
b) Clutch system actuation, Hydraulic	Yes	
c) Gearbox, synchromesh	Yes	
d) Number of speeds, min.	8F, 2R Yes (Mandatory)	
e) Drive configuration	6x4 Yes (mandatory)	
5. BRAKES TYRES AND SUSPENSION.		
a) Brakes hydraulic-pneumatic assisted, Exhaust brakes, Trailer brakes, and Parking brakes.	Yes	
b) Mechanical parking brake, to act on transmission	Yes	

c) Rear tyres	Dual	
d) Tyres size locally manufactured	Yes	
e) Optimum tyre size	Specify	
f) Suspension, front and rear heavy-duty leaf springs with telescopic shock absorbers at front. Trunion type suspension at rear.	Yes	
6. STEERING, CONTROL AND CAB.		
a) Right Hand Drive steering	Yes	
b) Power assisted steering type	Yes (mandatory)	
c) All steel, spacious cab to seat 3 passengers comfortably	Yes	
d) Adjustable driver's seat.	Yes	
e) Seat belts.	Yes	
7. LOGGING SEMI-TRAILER FITTINGS AND FABRICATION.		
a) A standard production, open side, 40'' long logging semi-trailer complete with three braked axle suitable for transporting poles.	Yes (mandatory)	
b) 12No. Standard container securing hooks to hold the side supporting beams.	Yes (mandatory)	
c) 6No. side supporting beams complete with fastening chain hooks	Yes (mandatory)	
d) Platform body floor made of mild steel plate of 3mm thickness.	Yes (mandatory)	
e) Fixed front, middle and rear supporting beams fully reinforced at the edges.	Yes (mandatory)	
8. ELECTRICAL SYSTEM/INSTRUMENTS.		
a) System voltage, negative earth	24V	
b) Battery capacity and size	2x12v, 150AH	
c) Full lighting to conform to Cap 403, subs 23-Kenya Traffic Act	Yes	
d) Standard instrumentation panels and all operational control switches.	Yes	
9. EQUIPMENT.		
a) Heavy duty type front fender.	Yes	
b) 2 No. spare wheels.	Yes (mandatory)	
c) Sun visors supplied two.	Yes	
d) Rear view mirrors (external and internal) supplied	Yes	
e) Full size spare tyres with rim and carrier for the semi-trailer.	2No. Yes (mandatory)	
f) Heavy duty hydraulic (telescopic) jack, wheel brace &	Yes	

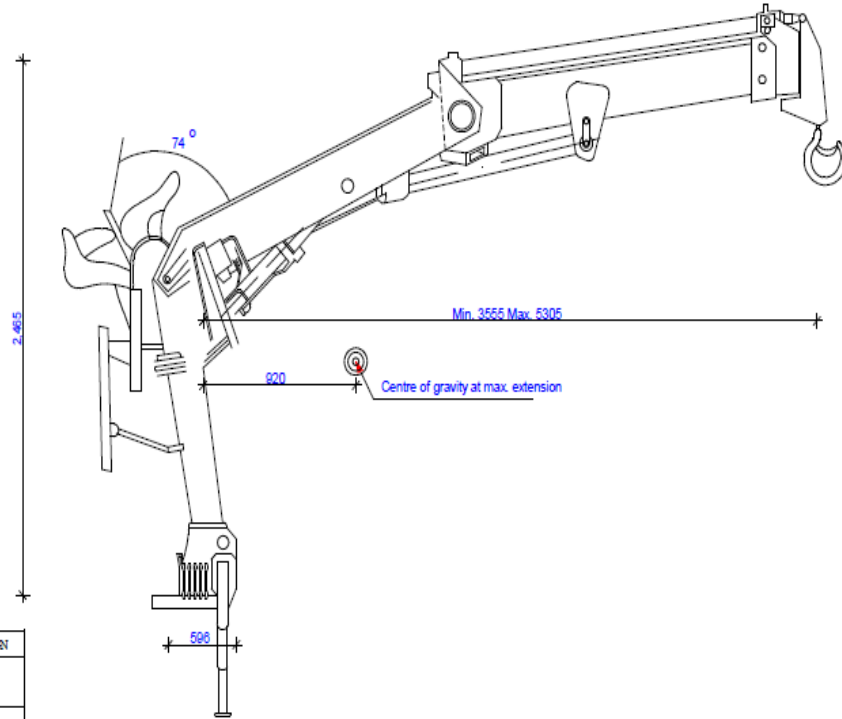
manufacturer's standard tools,		
g) Hazard Triangles, First Aid kit KS-2094-2007 and fire extinguisher.	Yes (mandatory)	
h) Vehicle to be fitted with electronic speed governor.	Yes (mandatory)	
i) Governor to limit maximum speed to 80km/hr.	Yes (mandatory)	
j) Governor to be tamper proof.	Yes (mandatory)	
k) Governor to be certified by CM&TE before fitting.	Yes (mandatory)	
l) Engine immobilizer system fitted.	Yes	
m) Supply additional Loose Floor rubber mats.	Yes	
n) Provide loose Tyre inflating hose pipe (at least 20 meters long)	Yes (mandatory)	
o) Chevrons and reflectors fitted on rear to conform to Kenya traffic act.	Yes	
p) Car identity on all Glasses and Lights.	Yes	
10. WARRANTY & FREE SERVICE.		
a) Specimen of vehicle warranty to be submitted when tendering	yes	
b) Each vehicle supplied to carry a statement of warranty	Yes	
c) Vehicle warranty duration min. 12 Months	Specify (months)	
d) 40,000Km whichever occurs first	Specify (KMS) (mandatory)	
e) Vehicle Free Service on Labour & Parts	Parts (Kms)	
	Labour (Kms)	
11. MANUALS.		
a) All literature in the English language.	Yes (mandatory)	
b) Repair manuals/ microfiche/CD, supplied.	Yes (mandatory)	
c) Parts catalogue/microfiche/CD supplied.	Yes (mandatory)	
d) Driver's handbook supplied.	Yes	
e) Service schedule supplied.	Yes (mandatory)	
12. OTHER REQUIREMENTS.		
a) Manufacturer's authorization supplied when tendering.	Yes (mandatory)	
b) Evidence (in form of purchase documents) of minimum 10 units sold and serviced in Kenya.	Yes (Mandatory)	
c) Franchise Holders and dealers who own fully fledged Workshops with adequate equipment and facilities.	Yes (Mandatory)	
d) Body construction and all fitments to conform to Kenya traffic act and to have a certificate from vehicle inspection centre.	Yes (mandatory)	
e) Prime mover to be inspected by the KPLC Engineer prior to delivery.	Yes (mandatory)	
f) Prime mover and semi-trailer to be registered by Registrar of	Yes (mandatory)	

Motor Vehicles prior delivery.		
g) Indicate name and physical addresses of all Dealers/Agents where genuine spares and back-up service can be obtained in at least four (5) major Kenya Power depots (Nairobi, Mombasa, Kisumu, Nyeri, Nakuru and Eldoret).	Attach list – Yes (mandatory)	

WATER BOWSER-2500 LITRES**QUANTITY: 3****SPECIFICATION No. KPLC-TPT-23-16-17****DESCRIPTION: 2500L Capacity Water Bowser.****TENDERERS'S NAME.....**

	KPLC Requirements	
1. GENERAL		
a) Make	-	
b) Model	-	
c) Country of origin	-	
d) Manufacturer's literature/brochures	Yes (mandatory)	
e) and specification supplied	Yes (mandatory)	
f) A standard production, 2500 liters Portable Water bowser of latest design in the class, robust construction in current production and marketed in Kenya.	Yes (mandatory)	
g) Supplied new.	Yes (mandatory)	
2. DIMENSIONS AND WEIGHTS.		
a) Overall length min.	4600 mm	
b) Water tank capacity.	2500Litres	
c) Overall height approx. min.	1400 mm	
d) Ground Clearance, min.	190 mm Yes mandatory)	
e) Allowable total dry weight max.	530KgYes (mandatory)	
3. BRAKES AND TYRES.		
a) Tyre (size) locally manufactured 750x16x10 ply tyres.	Yes (mandatory)	
b) Optimum tyre size.	Specify	
c) 4 ton rating braked axle.	Yes (mandatory)	
d) 6 holes center plate rims.	Yes (mandatory)	
e) Screw jack stabilizer fitted.	Yes (mandatory)	
f) Plate type towing hitch.	Yes (mandatory)	
4. BODY AND FINISH.		
a) Water tank mounted on a rigid chassis.	Yes (mandatory)	
b) Water tank fitted with internal baffles.	Yes (mandatory)	
c) Water tank fitted with manhole. Complete with cap.	Yes	

d) Water tank fitted with 3'' inlet nozzle.	Yes	
e) Water tank fitted with 2'' outlet nozzle.	Yes	
f) All body steelworks to be thoroughly cleaned before painting. Exterior finish to be proceeded by one coat primer (red oxide) and under coat.	Yes (mandatory)	
g) Water bowser to be painted in high close Kenya Power corporate new paints	Yes (mandatory)	
5. ELECTRICAL SYSTEM AND INSTRUMENTS.		
a) Full lighting to conform to Cap 403, 23-Kenya Traffic Act.	Yes	
b) Fitted with Chevrons, reflectors, and reflective strip.	Yes (mandatory)	
6. WARRANTY & FREE SERVICE.		
a) Specimen of Water bowser be submitted when tendering	Yes	
b) Water bowser warranty min., 12 Months or	Specify - Months	
7. OTHER REQUIREMENTS.		
a) Manufacturer's authorization supplied when tendering.	Yes (mandatory)	
b) Evidence (in form of purchase documents) of minimum 10 units sold and serviced in Kenya.	Yes (mandatory)	
c) Franchise Holders and dealers who own fully fledged workshop(s) equipment with adequate facilities.	Yes (Mandatory)	
d) Evidence (in form of purchase documents) of minimum 10 units sold and serviced in Kenya.	Yes (Mandatory)	
e) Body construction and all fitments to conform to Kenya traffic act and to have a certificate from vehicle inspection center.	Yes (mandatory)	
f) Water boozer to be inspected by the Senior Transport Engineer prior to delivery.	Yes (mandatory)	
g) Water boozer to be registered by Registrar of Motor Vehicles prior delivery.	Yes (mandatory)	
h) Indicate name and physical addresses of all Dealers/Agents where genuine spares and back-up service can be obtained in at least one major Kenya Power depots (Nairobi, Mombasa, Kisumu, Nyeri, Nakuru and Eldoret).	Attach list – Yes (mandatory)	



	DATE	SIGN
APPROVED		
CHECKED ENGINEER I/C		
CHECKED HEAD D/MAN		
CHECKED SUPERVISOR		
DRAWN	20/01/2003	J.M Kabare
SURVEYED		
TRACED		

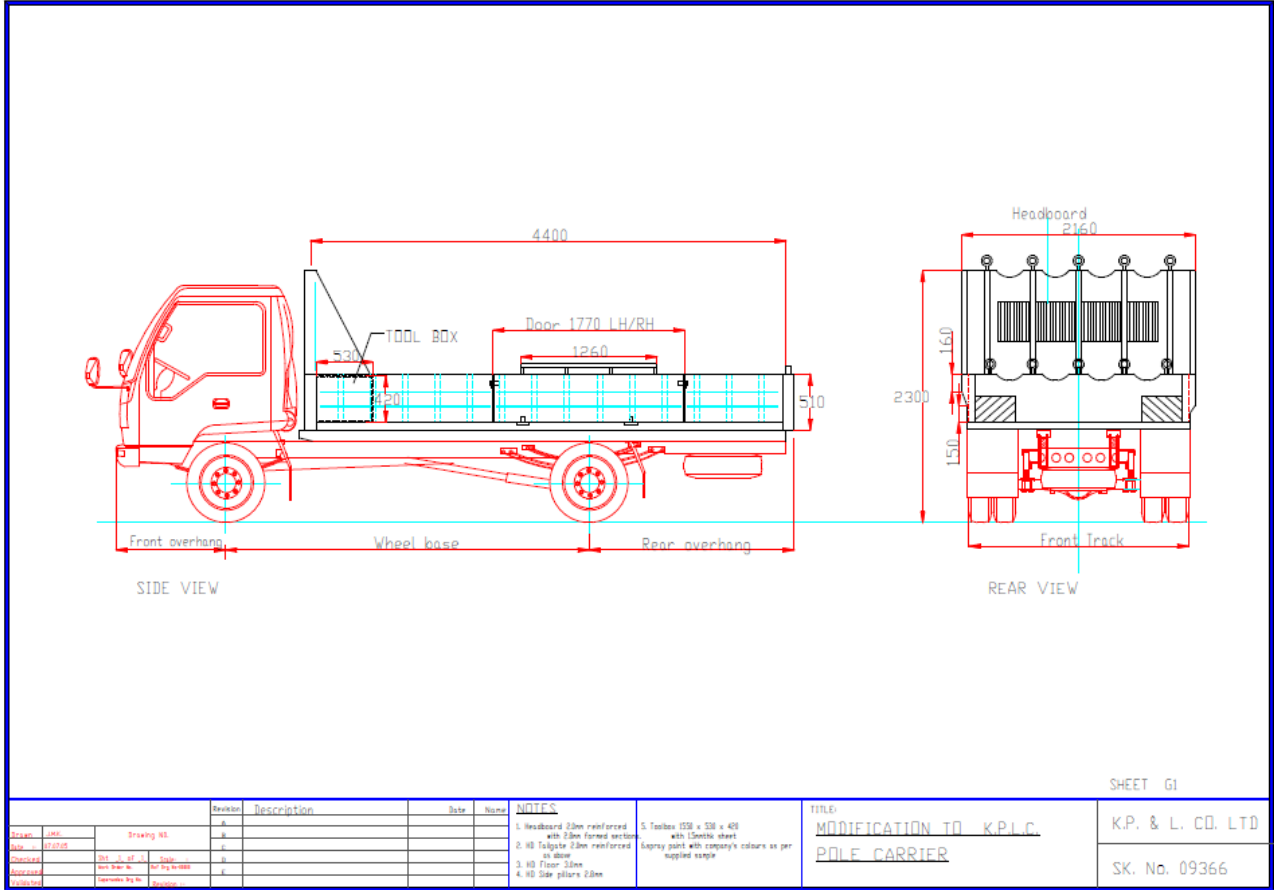
REF	REVISION	DATE	SIGN	CHECKED	DATE

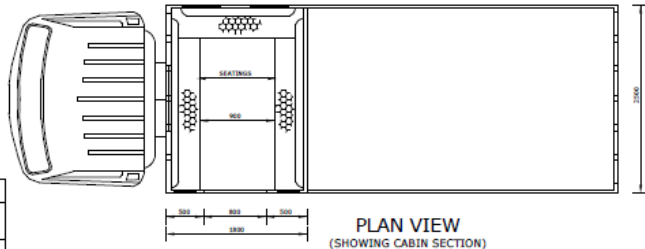
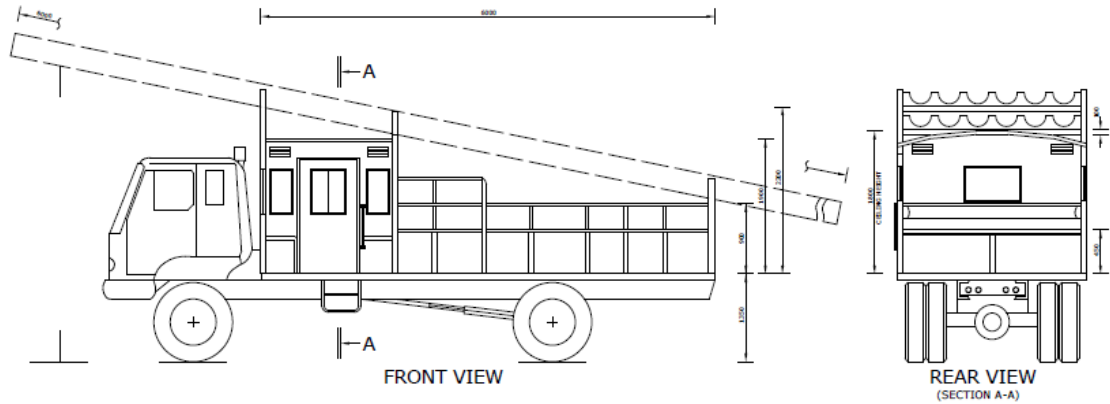
DESIGN OF K.P.L.C.
HIAB TRUCK MOUNTED CRANE
 NOT TO SCALE

Sheet J2

K. P. & L. Co. LTD

SK. No. 09366





	DATE	SIGN
APPROVED		
CHECKED ENGINEER U/C		
CHECKED HEAD D/YMAN		
CHECKED HEAD SURVEYOR		
DRAWN	APRIL 2012	DENNIS .W.
SURVEYED		
TRACED		

REF	REVISION	DATE	SIGN	CHECKED	DATE

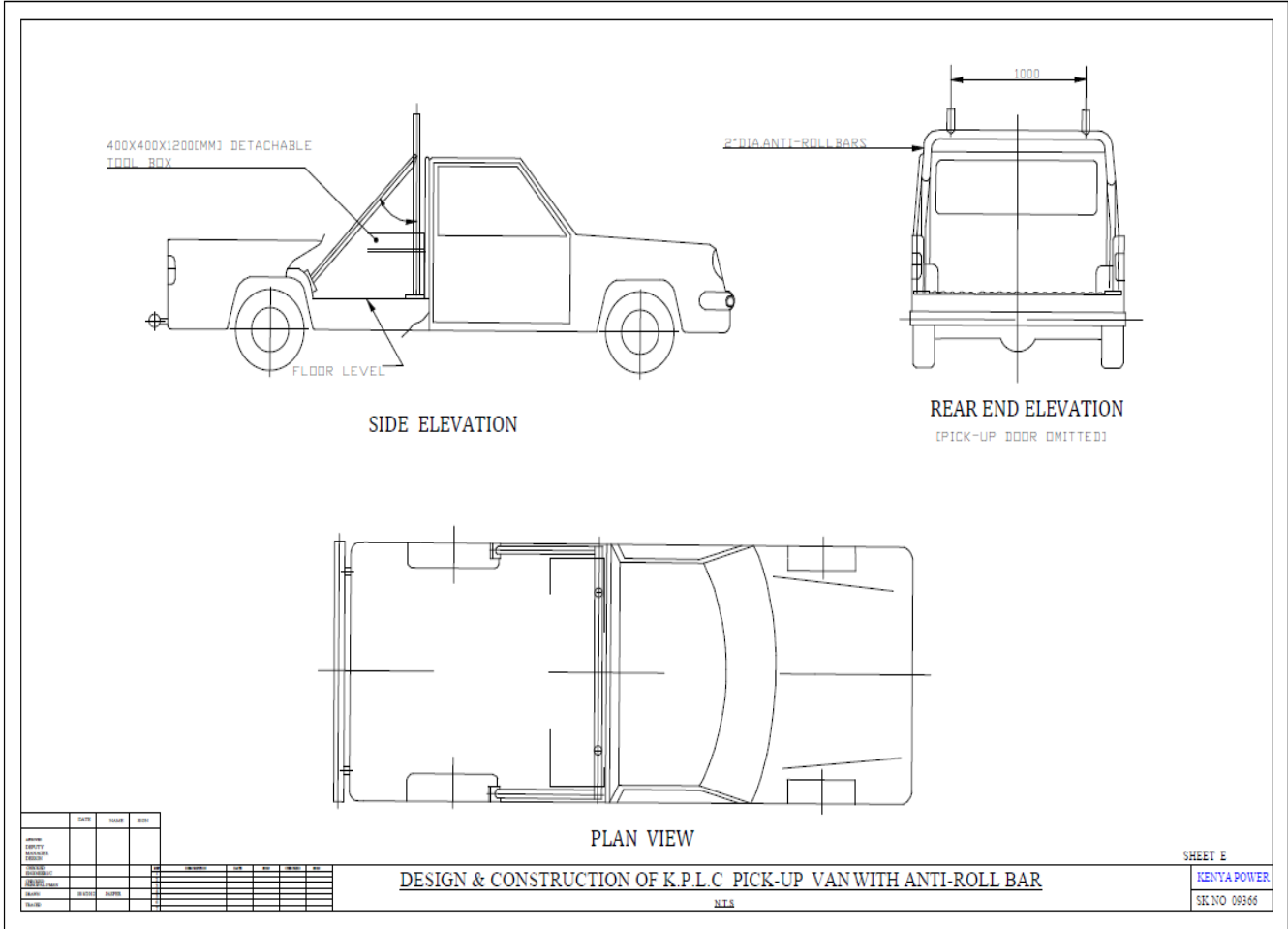
KENYA POWER DESIGN & CONSTRUCTION LORRY
FOR COMBINED PERSONNEL(CABIN)&POLES

SCALE: 1:25

SHEET C 2

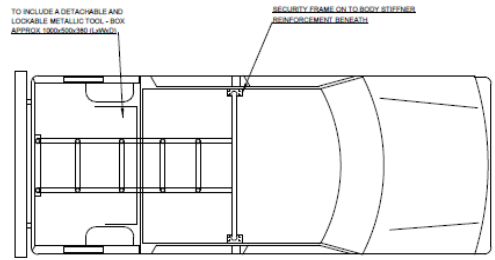
KENYA POWER

SK.NO 09366

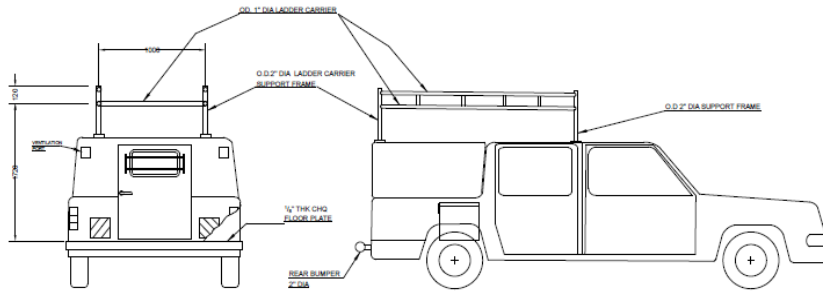


NOTES:
 DIMENSIONS IN MM UNLESS OTHERWISE STATED.
 PLACE 1/2" ANTI SLIP CHECKER PLATE TO REINFORCE PICK UP FLOOR.
 LADDER CARRIER FRAMEWORK TO COMPRISE Ø 2" X 1/2" THK BLACK PIPE
 SECURED WITH SUITABLE BOLTED WEB

CABIN TAIL WINDOW TO HAVE SUITABLE PROTECTING GRILL TO BE BOLTED ON TO THE BODY FOR SAFETY OF WINDOW
 AND EASE OF MAINTAINANCE.
 REAR EXTERIOR CABIN SHEET MATERIAL TO BE ZINCO SHEET GAUGE 22



PLAN VIEW



REAR ELEVATION

FRONT ELEVATION

APPROVED BY	NAME	DATE	ISSUE

NO.	REVISION	DATE	BY	CHECKED	DATE

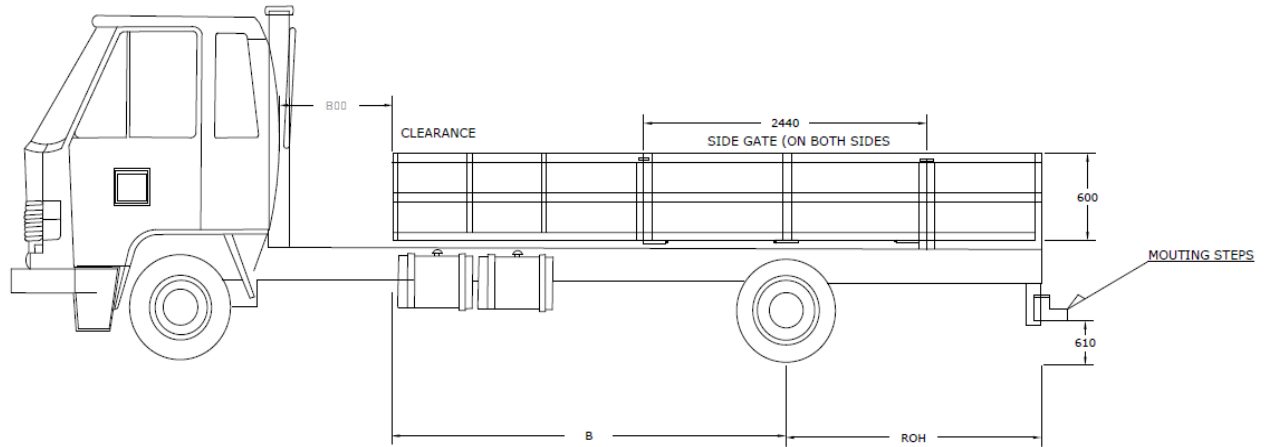
DESIGN OF KPLC TRIPLE CAB PICK-UP

SHEET D3

KENYA POWER

SK. No. 09366

NOTES:
 SIDE GATES TO BE FABRICATED AND DURABLE HINGES MADE TO SUIT THE DROP GATES.
 CARGO BAY FLOOR SHEET TO BE AT LEAST 3MM THK
 SIDE PANELS INCLUDING DROPSIDE GATES TO BE OF AT LEAST 2.5THK WITH APPROPRIATE REINFORCEMENTS
 WHEREVER ARC WELDING IS USED ALL THE WELD JOINTS MUST BE THOROUGHLY CLEANED OFF SLUGS AND WELD JOINTS CHECKED TO CONFORM TO BE STANDARDS



	DATE	ISSUE	BY
APPROVED			
DESIGNED			
CHECKED			
DESIGNED			
CHECKED			
DESIGNED			
CHECKED			

DATE	BY	CHECKED	DATE

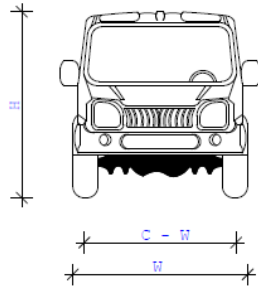
DESIGN OF K.P.L.C HIAB MOUNTED TRUCK

(DRAWN NOT TO SCALE)

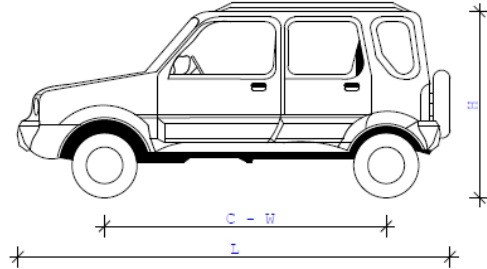
SHEET 1/1

K.P.&L.Co. Ltd.

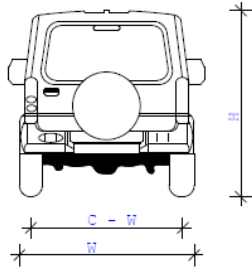
SK. No. 09366



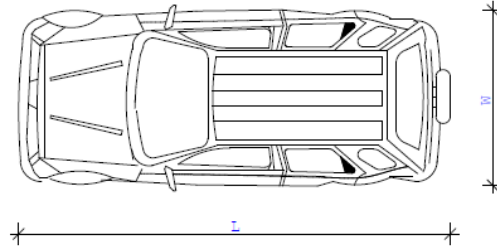
FRONT VIEW



SIDE VIEW



REAR VIEW



TOP VIEW

	DATE	SIGN
APPROVED		
CHECKED ENGINEER.I.C	20/06/2006	D.MUTAI
CHECKED PRIN. D.MAN	20/06/2006	L. OBARO
DRAWN	20/06/2006	J.KAHARE
TRACED		

UTILITY 4 x 4 VEHICLE

SHEET M/1

K.P.L.C

SK. No. 09366